

***Neisseria meningitidis*, Strain 92045**

Catalog No. NR-30538

Product Description: *Neisseria meningitidis* (*N. meningitidis*), strain 92045 was isolated from human blood in France, 1992. *N. meningitidis*, strain 92045 was deposited as a member of serogroup 29E.

Lot¹: 61506864

Manufacturing Date: 07FEB2013

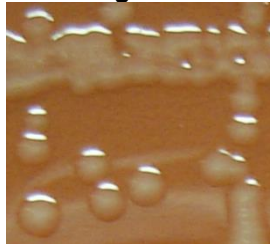
TEST	SPECIFICATIONS	RESULTS
Phenotypic Analysis Cellular morphology Colony morphology ² Biochemical tests: Remel RapID™ NH System	Report results Report results Consistent with <i>N. meningitidis</i>	Gram-negative cocci Circular, convex, entire and smooth (Figure 1) Consistent with <i>N. meningitidis</i>
Genotypic Analysis Sequencing of 16S ribosomal RNA gene (~ 1400 base pairs)	Consistent with <i>N. meningitidis</i>	Consistent with <i>N. meningitidis</i> ³
Viability (post-freeze)²	Growth	Growth

¹*N. meningitidis*, strain 92045 was deposited by Lee H. Harrison, M.D., Professor, Departments of Medicine and Infectious Diseases, University of Pittsburgh School of Medicine, Pittsburgh, Pennsylvania, USA. The deposited material was inoculated into *Haemophilus* Test media and incubated for 24 hours at 37°C in an aerobic atmosphere with 5% CO₂. Broth was then added to kolles and incubated for 24 hours at 37°C in an aerobic atmosphere with 5% CO₂ to produce this lot.

²24 hours at 37°C in an aerobic atmosphere with 5% CO₂ on Chocolate agar

³≥ 99% identical to *N. meningitidis*, strain 92045 (GenBank: ALXW01000006)

Figure 1



Date: 12 JUN 2013

Signature:

Title: Technical Manager, BEI Authentication or designee

ATCC®, on behalf of BEI Resources, hereby represents and warrants that the material provided under this certificate has been subjected to the tests and procedures specified and that the results described, along with any other data provided in this certificate, are true and accurate to the best of ATCC®'s knowledge.

ATCC® is a trademark of the American Type Culture Collection.

You are authorized to use this product for research use only. It is not intended for human use.

