

***Neisseria meningitidis*, Strain NM3001**

**Catalog No. NR-30542**

**Product Description:** *Neisseria meningitidis* (*N. meningitidis*), strain NM3001 was isolated from human blood in the United States, 2006. *N. meningitidis*, strain NM3001 was deposited as a member of serogroup NG.

**Lot<sup>1</sup>: 61506865**

**Manufacturing Date: 04FEB2013**

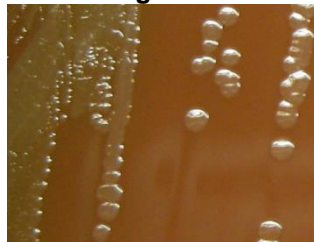
TEST	SPECIFICATIONS	RESULTS
<b>Phenotypic Analysis</b> Cellular morphology Colony morphology <sup>2</sup>  Biochemical tests: Remel RapID™ NH System	Report results Report results  Consistent with <i>N. meningitidis</i>	Gram-negative cocci and diplococci Circular, convex, entire, smooth, glistening and gray (Figure 1)  Consistent with <i>N. meningitidis</i>
<b>Genotypic Analysis</b> Sequencing of 16S ribosomal RNA gene (~ 1490 base pairs)	Consistent with <i>N. meningitidis</i>	Consistent with <i>N. meningitidis</i> <sup>3</sup>
<b>Viability (post-freeze)<sup>2</sup></b>	Growth	Growth

<sup>1</sup>*N. meningitidis*, strain NM3001 was deposited by Lee H. Harrison, M.D., Professor, Departments of Medicine and Infectious Diseases, University of Pittsburgh School of Medicine, Pittsburgh, Pennsylvania, USA. The deposited material was inoculated into *Haemophilus* Test media and incubated for 24 hours at 37°C in an aerobic atmosphere with 5% CO<sub>2</sub>. Broth was then added to kolles and incubated for 48 hours at 37°C in an aerobic atmosphere with 5% CO<sub>2</sub>. Due to poor growth on the kolles, a second passage was completed on new kolles (incubated for 48 hours at 37°C in an aerobic atmosphere with 5% CO<sub>2</sub>) to produce this lot.

<sup>2</sup>24 hours at 37°C in an aerobic atmosphere with 5% CO<sub>2</sub> on Chocolate agar

<sup>3</sup>≥ 99% identical to *N. meningitidis*, strain NM3001 (GenBank: ALYA01000011)

**Figure 1**



**Date:** 12 JUN 2013

**Signature:**

**Title:**

Technical Manager, BEI Authentication or designee

ATCC®, on behalf of BEI Resources, hereby represents and warrants that the material provided under this certificate has been subjected to the tests and procedures specified and that the results described, along with any other data provided in this certificate, are true and accurate to the best of ATCC®'s knowledge.

ATCC® is a trademark of the American Type Culture Collection.

You are authorized to use this product for research use only. It is not intended for human use.

