

**Genomic DNA from *Giardia lamblia*, Strain Be-1**

**Catalog No. NR-13401**

**Product Description:** Genomic DNA was isolated from *Giardia lamblia* (*G. lamblia*), strain Be-1 (Beaver-1, IP-0482:1), which was isolated by Dr. Faubert and M. Belosevic from cysts obtained from beaver feces found in pond mud in Banff National Park, Canada. The cysts were axenized at the NIH.

**Lot<sup>1</sup>: 58568503**

**Manufacturing Date: 24NOV2010**

TEST	SPECIFICATIONS	RESULTS
<b>Agarose Gel Electrophoresis</b>	High molecular weight chromosomal DNA	High molecular weight chromosomal DNA (Figure 1)
<b>Content by PicoGreen<sup>®</sup> Measurement</b>	0.5 to 3 µg in 25 to 100 µL per vial	2.2 µg in 84 µL per vial (0.03 µg/ µL)
<b>Functional Activity by PCR Amplification<sup>2</sup></b> Sequencing of cytidine triphosphate (CTP) synthase gene	~ 1800 base pair amplicon	~ 1800 base pair amplicon
<b>Genotypic Analysis</b> CTP synthase gene (~ 560 base pairs)	Consistent with <i>G. lamblia</i>	Consistent with <i>G. lamblia</i>
<b>OD<sub>260</sub>/OD<sub>280</sub> Ratio</b>	1.7 to 2.0	1.7
<b>Inactivation of Source Culture</b> 10% of vial contents inoculated on ATCC <sup>®</sup> CRL-2695 <sup>3</sup>	No viable organisms detected	No viable organisms detected

<sup>1</sup>NR-13401 was produced from a culture of NR-9237 lot 58447012. Genomic DNA was extracted using proprietary technology.

<sup>2</sup>Primer sequences and conditions for PCR are available upon request.

<sup>3</sup>Incubated in Keister's Modified TYIS33 *Giardia* Medium (ATCC<sup>®</sup> Medium 2695) adjusted to contain 10% bovine serum for 6 days at 35°C in an aerobic atmosphere.

**Date:** 17 MAY 2013

**Signature:**



**Title:**

Technical Manager, BEI Authentication or designee

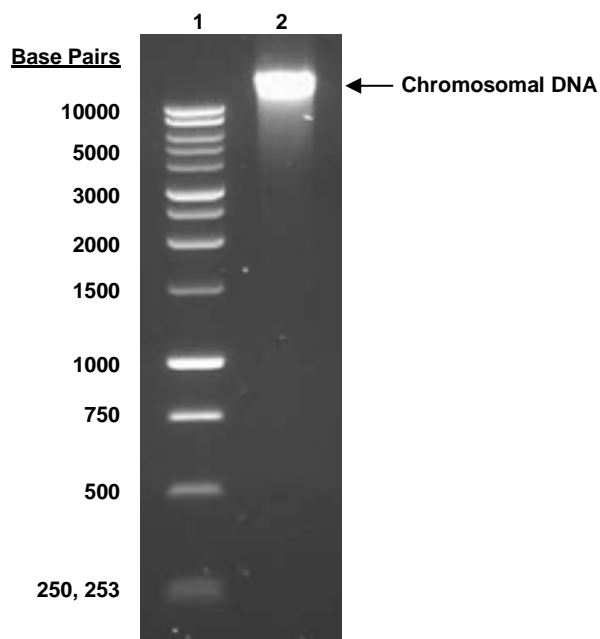
ATCC<sup>®</sup>, on behalf of BEI Resources, hereby represents and warrants that the material provided under this certificate has been subjected to the tests and procedures specified and that the results described, along with any other data provided in this certificate, are true and accurate to the best of ATCC<sup>®</sup>'s knowledge.

ATCC<sup>®</sup> is a trademark of the American Type Culture Collection.

You are authorized to use this product for research use only. It is not intended for human use.



Figure 1



Lane 1: Promega 1kb DNA Ladder  
Lane 2: 200 ng of NR-13401