

**H3 Hemagglutinin (HA) Protein from Influenza Virus, A/Brisbane/10/2007 (H3N2), Recombinant from Baculovirus**

**Catalog No. NR-19238**

This reagent is the tangible property of the U.S. Government.

**Product Description:** H3 hemagglutinin (HA) protein from influenza virus, A/Brisbane/10/2007 (H3N2) is a full-length glycosylated recombinant protein that was produced in ExpressSF+<sup>®</sup> insect cells using a baculovirus expression vector system.<sup>1</sup> Recombinant H3 HA protein was purified under conditions that preserve its biological activity and tertiary structure.

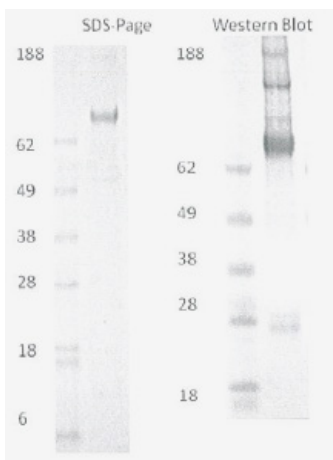
**Lot: 61585445**

**Manufacturing Date: 06JUN2013**

TEST	SPECIFICATIONS	RESULTS
<b>SDS-PAGE (Coomassie Blue Densitometry)</b>	HA bands (HA0, HA1, HA2) account for > 90% of total density	HA bands (HA0, HA1, HA2) account for > 90% of total density (Figure 1)
<b>Concentration by Bicinchoninic Acid Protein Assay</b>	Report results	474 µg per mL
<b>Hemagglutination (HA) Assay with Chicken Red Blood Cells</b>	Report results	102.4 HA units per µg total protein
<b>Final Product</b> Quantity per vial Volume per vial	100 µg (± 10%) per vial Report results	99.4 µg per vial 210 µL per vial
<b>Western Blot</b> Anti-histidine monoclonal antibody	Report results	Reactive with HA0 (Figure 1)
<b>Sterility</b>	0.22 µm sterile-filtered	0.22 µm sterile-filtered
<b>Bioburden</b>	Report results	< 10 colony-forming units per mL
<b>Endotoxin Content</b>	Report results	< 6.25 EU per mL

<sup>1</sup>U.S. Patent Numbers 5,762,939 and 6,103,526.

**Figure 1**



Lane 1: Invitrogen MW Marker  
Lane 2: 1.0 µg NR-19238

## Certificate of Analysis for NR-19238

**Date:** 10 JUL 2013

**Signature:** *Dorothy C. Young*

**Title:** Technical Manager, BEI Authentication or designee

ATCC<sup>®</sup>, on behalf of BEI Resources, hereby represents and warrants that the material provided under this certificate has been subjected by the contractor to the tests and procedures specified and that the results described, along with any other data provided in this certificate, are true and accurate to the best of ATCC<sup>®</sup>'s knowledge.

ATCC<sup>®</sup> is a trademark of the American Type Culture Collection.

You are authorized to use this product for research use only. It is not intended for human use.

