

HA1 Hemagglutinin (HA) Protein with N-Terminal Histidine Tag from Influenza Virus, A/Brisbane/59/2007 (H1N1), Recombinant from Baculovirus

Catalog No. NR-13411

This reagent is the tangible property of the U.S. Government.

Product Description: The HA1 form of the H1 hemagglutinin protein from influenza virus A/Brisbane/59/2007 (H1N1) containing an N-terminal histidine tag was produced in Sf9 insect cells using a baculovirus expression vector system and was purified using conventional chromatographic techniques.

Lot: 61695137

Manufacturing Date: 16JUL2013

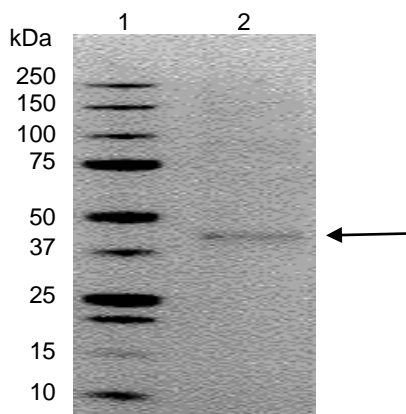
TEST	SPECIFICATIONS	RESULTS
Appearance	Clear and colorless	Clear and colorless
SDS-PAGE (Figure 1) Purity by Coomassie Blue densitometer scan	Dominant band of expected size (41 kDa) > 90% pure	Dominant band of expected size (41 kDa) > 90% pure
Concentration by Bradford Assay¹	Report results	102 µg/mL
Final Product Quantity per vial Volume per vial	Report results Report results	51 µg 500 µL
Functional Activity Hemagglutination activity using 0.5% chicken or turkey red blood cells Western blot analysis Polyclonal anti-H1 HA ² Monoclonal anti-histidine tag ³	Report results Reactive Reactive	No hemagglutination activity Reactive (Figure 2) Reactive (Figure 3)
Sterility	Report results	0.2 µm sterile-filtered

¹Using BSA as a standard

²Immune Technology Corp. (Cat. No. IT-003-001)

³R & D Systems® (Cat. No. MAB050) (IgG₁)

Figure 1 – SDS-PAGE

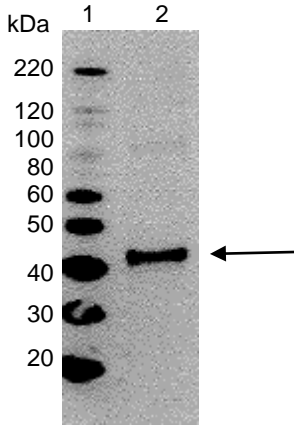


Lane 1 – Precision Plus Protein™ Marker

Lane 2 – 10 µg NR-13411

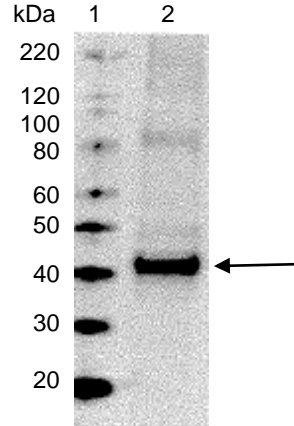
Certificate of Analysis for NR-13411

Figure 2 – Western Blot with Polyclonal Anti-H1 HA



Lane 1 – MagicMark™ XP Western Protein Standard
Lane 2 – 0.5 µg NR-13411

Figure 3 – Western Blot with Monoclonal Anti-Histidine Tag



Lane 1 – MagicMark™ XP Western Protein Standard
Lane 2 – 0.5 µg NR-13411

Date: 25 JUL 2013

Signature: *Dorothy C. Young*

Title: Technical Manager, BEI Authentication or designee

ATCC®, on behalf of BEI Resources, hereby represents and warrants that the material provided under this certificate has been subjected to the tests and procedures specified and that the results described, along with any other data provided in this certificate, are true and accurate to the best of ATCC®'s knowledge.

ATCC® is a trademark of the American Type Culture Collection.
You are authorized to use this product for research use only. It is not intended for human use.

