

Bacteroides caccae, Strain CL03T12C61

Catalog No. HM-728

Product Description: *Bacteroides caccae* (*B. caccae*), strain CL03T12C61 was isolated from healthy adult human feces in Boston, Massachusetts, USA.

Lot^{1,2}: 61662304

Manufacturing Date: 22APR2013

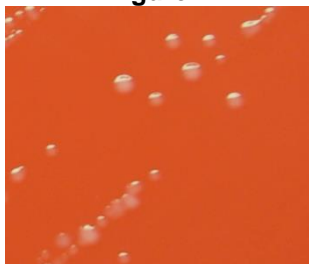
TEST	SPECIFICATIONS	RESULTS
Phenotypic Analysis Cellular morphology Colony morphology ³	Report results Report results	Gram-negative rods Circular, convex, entire and smooth (Figure 1)
Genotypic Analysis Sequencing of 16S ribosomal RNA gene (1430 base pairs)	≥ 99% identical to GenBank: AGXF01000001 (<i>B. caccae</i> , strain CL03T12C61)	≥ 99% identical to GenBank: AGXF01000001 (<i>B. caccae</i> , strain CL03T12C61)
Viability (post-freeze)³	Growth	Growth

¹Quality control of HMP material is only performed to demonstrate that the material distributed by BEI Resources is identical to the deposited material. It should not be considered a complete characterization of the deposited organism.

²*B. caccae*, strain CL03T12C61 was deposited by was deposited by Laurie E. Comstock, Ph.D., Associate Microbiologist, Department of Medicine, Channing Laboratory, Brigham and Women's Hospital, Harvard Medical School, Boston, Massachusetts. HM-728 was produced by inoculation of the deposited material into Modified Reinforced Clostridial broth and incubated for 72 hours at 37°C in an anaerobic atmosphere (80% N₂:10% CO₂:10% H₂). The material from the initial growth was passaged once in Modified Reinforced Clostridial broth for 72 hours at 37°C in an anaerobic atmosphere (80% N₂:10% CO₂:10% H₂) to produce this lot.

³48 hours at 37°C in an anaerobic atmosphere (90% N₂:5% CO₂:5% H₂) on Tryptic Soy agar with 5% defibrinated sheep blood

Figure 1



Date: 29 JUL 2013

Signature:

Title: Technical Manager, BEI Authentication or designee

ATCC®, on behalf of BEI Resources, hereby represents and warrants that the material provided under this certificate has been subjected to the tests and procedures specified and that the results described, along with any other data provided in this certificate, are true and accurate to the best of ATCC®'s knowledge.

ATCC® is a trademark of the American Type Culture Collection.

You are authorized to use this product for research use only. It is not intended for human use.

