

**Escherichia coli, Strain 9.0111**

**Catalog No. NR-17632**

**Product Description:** *Escherichia coli* (*E. coli*), strain 9.0111 is a human isolate; it has been typed as a non-O157, Shiga toxin-producing *E. coli* (STEC) strain.

**Lot<sup>1</sup>: 60798950**

**Manufacturing Date: 11JUL2013**

| TEST  | SPECIFICATIONS   | RESULTS   |
|---|--|---|
| <b>Phenotypic Analysis</b><br>Cellular morphology<br>Colony morphology <sup>2</sup><br><br>Analytical profile index (API <sup>®</sup> 20 E) | Report results<br>Report results<br><br>Consistent with <i>E. coli</i> | Gram-negative rods<br>Circular, convex, entire,<br>smooth and gray (Figure 1)<br>Consistent with <i>E. coli</i> |
| <b>Genotypic Analysis</b><br>Sequencing of 16S ribosomal RNA gene<br>(~ 1490 base pairs)  | Consistent with <i>E. coli</i>   | Consistent with <i>E. coli</i> <sup>3</sup>   |
| <b>PCR Assay of Extracted DNA</b><br>PCR amplification of chromosomal borne virulence markers <sup>4</sup><br><i>stx1</i><br><i>stx2</i>    | Positive<br>Positive   | Positive<br>Positive  |
| <b>Viability (post-freeze)<sup>2</sup></b>  | Growth   | Growth  |

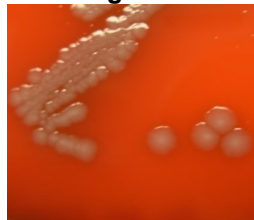
<sup>1</sup>*E. coli*, strain 9.0111 was deposited by C. DebRoy, Director, *E. coli* Reference Center, Department of Veterinary and Biomedical Sciences, College of Agricultural Sciences, The Pennsylvania State University, University Park, Pennsylvania. NR-17632 was produced by inoculation of the deposited material into Tryptic Soy broth and grown 24 hours at 37°C in an aerobic atmosphere. Broth inoculum was added to kolles which were grown 24 hours at 37°C in an aerobic atmosphere to produce this lot.

<sup>2</sup>24 hours at 37°C in an aerobic atmosphere on Tryptic Soy agar with 5% defibrinated sheep blood

<sup>3</sup>≥ 99% identical to GenBank: AEZZ02000003 (*E. coli*, strain 9.0111)

<sup>4</sup>Performed using the Diarrheagenic *E. coli* 12-Target Multiplex PCR for Virulence Typing Assay (BEI Resources NR-13439); the primers for CVD432, *aggR*, *bfpA*, *esth*, EAF and *astA* are described in Kimata, K., et al. "Rapid Categorization of Pathogenic *Escherichia coli* by Multiplex PCR." *Microbiol. Immunol.* 49 (2005): 485-492. PubMed: 15965295.

**Figure 1**



**Date:** 19 MAY 2015

**Signature:**

BEI Resources Authentication

ATCC<sup>®</sup>, on behalf of BEI Resources, hereby represents and warrants that the material provided under this certificate has been subjected to the tests and procedures specified and that the results described, along with any other data provided in this certificate, are true and accurate to the best of ATCC<sup>®</sup>'s knowledge.

ATCC<sup>®</sup> is a trademark of the American Type Culture Collection.

You are authorized to use this product for research use only. It is not intended for human use.

