

Genomic DNA from *Burkholderia multivorans*, Strain LMG 13010 (ATCC® BAA-247™)

Catalog No. NR-36041

Product Description: Genomic DNA was isolated from a preparation of *Burkholderia multivorans* (*B. multivorans*; formerly *Burkholderia cepacia* genomovar II), strain LMG 13010 (ATCC® BAA-247™).

Lot¹: 60948748

Manufacturing Date: 23APR2012

TEST	SPECIFICATIONS	RESULTS
Sequencing of 16S Ribosomal RNA Gene (~ 1490 base pairs)	Consistent with <i>B. multivorans</i>	Consistent with <i>B. multivorans</i> ²
Agarose Gel Electrophoresis	High molecular weight chromosomal DNA	High molecular weight chromosomal DNA (Figure 1)
Concentration by PicoGreen® Measurement	0.7 to 1.5 µg in 25 to 100 µL per vial	1.2 µg in 37 µL per vial (33 µg/mL)
Functional Activity by PCR Amplification 16S ribosomal RNA gene	~ 1500 bp amplicon	~ 1500 bp amplicon
OD₂₆₀/OD₂₈₀ Ratio	1.7 to 2.0	2.0
Bacterial Inactivation 10% of total yield plated on Tryptic Soy agar with 5% defibrinated sheep blood ^{3,4}	No viable bacteria detected	No viable bacteria detected

¹The bacterial preparation used for extraction of genomic DNA was produced by culture of BEI Resources NR-705 (Lot 4125525). Genomic DNA was extracted using proprietary technology.

²≥ 99% identical to GenBank: ALIW01000278 (*B. multivorans*, strain ATCC® BAA-247™)

³7 days at 37°C in an aerobic atmosphere with 5% CO₂

⁴An extraction procedure was used that has been shown to consistently inactivate 100% of Gram-positive and Gram-negative bacteria.

Date: 30 JUL 2013

Signature:



Title:

Technical Manager, BEI Authentication or designee

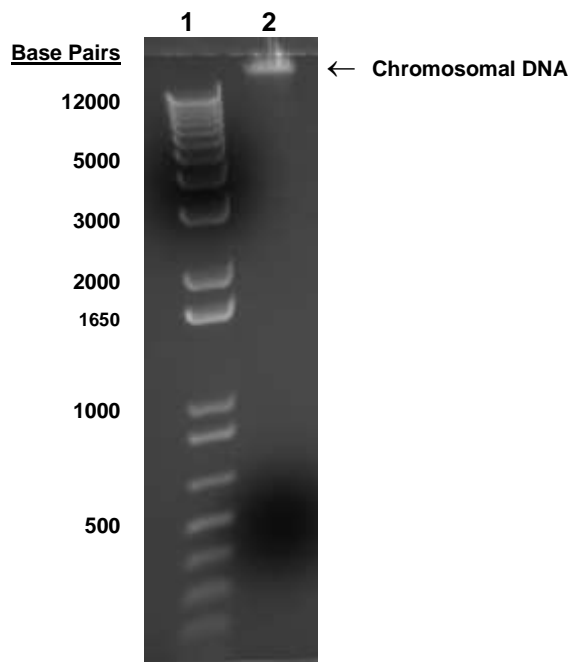
ATCC®, on behalf of BEI Resources, hereby represents and warrants that the material provided under this certificate has been subjected to the tests and procedures specified and that the results described, along with any other data provided in this certificate, are true and accurate to the best of ATCC®'s knowledge.

ATCC® is a trademark of the American Type Culture Collection.

You are authorized to use this product for research use only. It is not intended for human use.



Figure 1



Lane 1: Invitrogen™ TrackIt™ 1 Kb Plus DNA Ladder
Lane 2: 200 ng of NR-36041