

***Vibrio parahaemolyticus*, Isolate T6**

**Catalog No. NR-34578**

**Product Description:** *Vibrio parahaemolyticus* (*V. parahaemolyticus*), isolate T6 was obtained from an oyster in New South Wales, Australia, 2010.

**Lot<sup>1</sup>: 61500399**

**Manufacturing Date: 30JAN2013**

TEST	SPECIFICATIONS	RESULTS
<b>Phenotypic Analysis</b> Cellular morphology Colony morphologies <sup>2,3</sup>  Hemolysis Biochemical characterization: Analytical profile index (API <sup>®</sup> 20 E)	Report results Report results  Report results  Consistent with <i>V. parahaemolyticus</i>	Gram-negative rods Colony type 1: Circular, entire, smooth and gray (Figure 1) Colony type 2: Circular, entire, smooth and cream (Figure 1) α-hemolysis  Consistent with <i>V. parahaemolyticus</i>
<b>Genotypic Analysis</b> Sequencing of 16S ribosomal RNA gene (~ 890 base pairs) Riboprinter <sup>®</sup> Microbial Characterization System	Consistent with <i>V. parahaemolyticus</i> Consistent with <i>V. parahaemolyticus</i>	Consistent with <i>V. parahaemolyticus</i> <sup>4</sup> Consistent with <i>V. parahaemolyticus</i>
<b>Viability (post-freeze)<sup>2</sup></b>	Growth	Growth

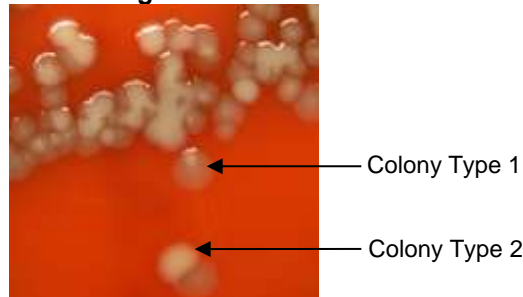
<sup>1</sup>NR-34578 was produced by inoculation of deposited material into Tryptic Soy broth and grown 24 hours in an aerobic atmosphere at 37°C. Broth inoculum was added to kolles which was grown 24 hours at 37°C and aerobic atmosphere to produce this lot.

<sup>2</sup>24 hours at 37°C and aerobic atmosphere on Tryptic Soy agar with 5% defibrinated sheep blood

<sup>3</sup>Two colony types were observed. Plating of the individual colony types showed that they did not revert to the mixed colony type. The 16S ribosomal RNA gene of each colony type was sequenced and determined to be ≥ 99% identical with the other colony type. Both colony types were consistent with *V. parahaemolyticus*.

<sup>4</sup>Also consistent with other *Vibrio* species

**Figure 1**



**Date:** 31 JUL 2013

**Signature:**

**Title:** Technical Manager, BEI Authentication or designee

ATCC<sup>®</sup>, on behalf of BEI Resources, hereby represents and warrants that the material provided under this certificate has been subjected to the tests and procedures specified and that the results described, along with any other data provided in this certificate, are true and accurate to the best of ATCC<sup>®</sup>'s knowledge.

ATCC<sup>®</sup> is a trademark of the American Type Culture Collection.  
 You are authorized to use this product for research use only. It is not intended for human use.

