

Monoclonal Anti-Junin Virus, Clone GD01-AG02 (produced *in vitro*)

Catalog No. NR-43776

This reagent is the property of the U.S. Government.

Product Description: IgG2ak

Mouse monoclonal antibody reactive with the surface glycoprotein of Junin virus¹ was affinity purified from hybridoma supernatant using protein G magnetic beads.

Lot: 61613332

Manufacturing Date: 28MAR2013

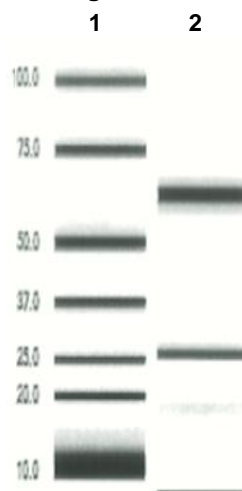
TEST	SPECIFICATIONS	RESULTS
Antibody Class Determination	IgG2ak	IgG2ak
Experion Pro260 Analysis	Correct molecular weight (MW) for heavy and light chains Report results	Correct MW for heavy and light chains (Figure 1) 93.6% pure
Concentration by Spectrophotometer at OD ₂₈₀	Report results	0.89 mg/mL
Functional Activity Indirect Fluorescent Antibody Test Indirect ELISA ^{2,3}	Report results Report results	Reactive at dilutions up to 1:12800 Not reactive
Sterility	0.22 µm filter-sterilized	0.22 µm filter-sterilized

¹Sanchez, A., et al. "Junin Virus Monoclonal Antibodies: Characterization and Cross-reactivity with Other Arenaviruses." *J. Gen. Virol.* 70 (1989): 1125-1132. PubMed: 2471803.

²Plates were coated with a 1:2000 dilution of Junin virus-infected cell lysate.

³Some monoclonal antibodies to the surface glycoprotein of Junin virus have shown reactivity by indirect ELISA while others have not. This is likely due to the conformational differences among the epitopes.

Figure 1



Lane 1: MW Markers (kDa)
Lane 2: NR-43776

Certificate of Analysis for NR-43776

Date: 08 AUG 2013

Signature: *Dorothy C. Young*

Title: Technical Manager, BEI Authentication or designee

ATCC[®], on behalf of BEI Resources, hereby represents and warrants that the material provided under this certificate has been subjected by the contractor and ATCC[®] to the tests and procedures specified and that the results described, along with any other data provided in this certificate, are true and accurate to the best of ATCC[®]'s knowledge.

ATCC[®] is a trademark of the American Type Culture Collection.

You are authorized to use this product for research use only. It is not intended for human use.

