

***Klebsiella* sp., Strain MS 92-3**

Catalog No. HM-354

Product Description: *Klebsiella* sp., strain MS 92-3 was isolated from a human gastrointestinal tract.

Lot^{1,2}: 60240169

Manufacturing Date: 04AUG2011

TEST	SPECIFICATIONS	RESULTS
Phenotypic Analysis Cellular morphology Colony morphology ³	Report results Report results	Gram-negative rod Circular, entire, convex and cream (Figure 1)
Genotypic Analysis Sequencing of 16S ribosomal RNA gene (1430 base pairs)	≥ 99% identical to depositor's sequence Consistent with <i>Klebsiella</i> spp.	Pending Consistent with <i>Klebsiella</i> spp. ⁴
Viability (post-freeze)³	Growth	Growth

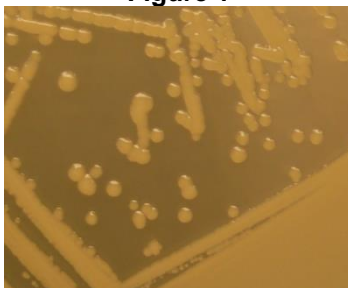
¹Quality control of HMP material is only performed to demonstrate that the material distributed by BEI Resources is identical to the deposited material. It should not be considered a complete characterization of the deposited organism.

²*Klebsiella* sp., strain MS 92-3 was deposited by Dr. Edgar C. Boedeker, M.D., Principal Investigator, Research Department, New Mexico Veterans Administration Hospital Care System, Albuquerque, New Mexico. HM-354 was produced by inoculation of the deposited material into Tryptic Soy broth and incubated for 24 hours at 37°C in an aerobic atmosphere. The material from the initial growth was passaged once in Tryptic Soy broth for 24 hours at 37°C in an aerobic atmosphere and added to kolles for 24 hours at 37°C in an aerobic atmosphere to produce this lot.

³24 hours at 37°C in an aerobic atmosphere on Tryptic Soy agar

⁴Also consistent with *Raoultella planticola*, which was designated as *Klebsiella* prior to 2001 [Drancourt, M., et al. "Phylogenetic Analyses of *Klebsiella* Species Delineate *Klebsiella* and *Raoultella* gen. nov., with Description of *Raoultella ornithinolytica* comb. nov., *Raoultella terrigena* comb. nov. and *Raoultella planticola* comb. nov." 51 (2001): 925-932. PubMed: 11411716.]

Figure 1



Date: 04 SEP 2013

Signature:

Title:

Technical Manager, BEI Authentication or designee

ATCC®, on behalf of BEI Resources, hereby represents and warrants that the material provided under this certificate has been subjected to the tests and procedures specified and that the results described, along with any other data provided in this certificate, are true and accurate to the best of ATCC®'s knowledge.

ATCC® is a trademark of the American Type Culture Collection.

You are authorized to use this product for research use only. It is not intended for human use.

