

Salmonella enterica subsp. enterica, Strain 14028s $\Delta mviA$ (Serovar Typhimurium)

Catalog No. NR-12176

Product Description: *Salmonella enterica* (*S. enterica*) subsp. *enterica*, strain 14028s $\Delta mviA$ (serovar Typhimurium) was derived from strain 14028s. The $\Delta mviA$ mutant was produced by creating a PCR product with *mviA* homologous sequences at the 5' and 3' ends of a linear fragment containing a kanamycin resistance cassette. *S. enterica* subsp. *enterica*, strain 14028s was transformed, and insertion of the *kan* cassette in place of *mviA* was confirmed by PCR. The final non-polar deletions were constructed by elimination of the *kan* cassette.

Lot¹: 61693044

Manufacturing Date: 18APR2013

TEST	SPECIFICATIONS	RESULTS
Phenotypic Analysis Cellular morphology Colony morphology ² Analytical profile index (API [®] 20 E) ³	Report results Report results Consistent with <i>Salmonella</i> spp.	Gram-negative rod Circular, low convex, entire, smooth and gray (Figure 1) Consistent with <i>Salmonella</i> spp.
Genotypic Analysis Sequencing of 16S ribosomal RNA gene (~ 950 base pairs) Riboprinter [®] Microbial Characterization System	Consistent with <i>S. enterica</i> Consistent with <i>S. enterica</i>	Consistent with <i>S. enterica</i> subsp. <i>enterica</i> Consistent with <i>S. enterica</i> subsp. <i>enterica</i> serovar Typhimurium
Serogroup Analysis	Report results	Serogroup B ⁴
Viability (post-freeze)²	Growth	Growth

¹NR-12176 was produced by inoculation of the deposited material into Tryptic Soy broth and grown 24 hours in an aerobic atmosphere at 37°C.

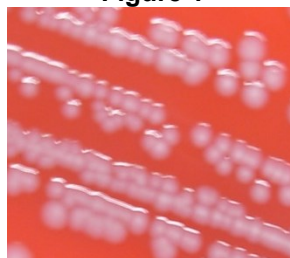
Broth inoculum was added to kolles which was grown 24 hours at 37°C and aerobic atmosphere to produce this lot.

²24 hours at 37°C and aerobic atmosphere on Tryptic Soy agar with 5% defibrinated sheep blood

³Additional serological tests are required to determine *Salmonella* species using API[®] 20 E

⁴Serogroup B contains serotype Typhimurium in addition to other serotypes

Figure 1



Date: 28 AUG 2013

Signature:

Title: Technical Manager, BEI Authentication or designee

ATCC[®], on behalf of BEI Resources, hereby represents and warrants that the material provided under this certificate has been subjected to the tests and procedures specified and that the results described, along with any other data provided in this certificate, are true and accurate to the best of ATCC[®]'s knowledge.

ATCC[®] is a trademark of the American Type Culture Collection.

You are authorized to use this product for research use only. It is not intended for human use.

