

**Salmonella enterica subsp. enterica, Strain ST2488 (Serovar Typhimurium)**

**Catalog No. NR-4393**

**Product Description:** *Salmonella enterica* (*S. enterica*) subsp. *enterica*, strain ST2488 (serovar Typhimurium) is a bovine clinical isolate from Washington, USA, collected in 1994.

**Lot<sup>1</sup>: 61646452**

**Manufacturing Date: 28MAR2013**

TEST	SPECIFICATIONS	RESULTS
<b>Phenotypic Analysis</b> Cellular morphology Colony morphology <sup>2</sup>  Analytical profile index (API <sup>®</sup> 20 E) <sup>3</sup>	Gram-negative rod Report results  Consistent with <i>Salmonella</i> spp.	Gram-negative rod Circular, convex, entire, smooth and light grey (Figure 1) Consistent with <i>Salmonella</i> spp.
<b>Genotypic Analysis</b> Sequencing of 16S ribosomal RNA gene (~ 1500 base pairs) Riboprinter <sup>®</sup> Microbial Characterization System	Consistent with <i>S. enterica</i>  Consistent with <i>S. enterica</i>	Consistent with <i>S. enterica</i> subsp. <i>enterica</i>  Consistent with <i>S. enterica</i> subsp. <i>enterica</i> serovar Typhimurium
<b>Serogrouping</b>	Report results	Serogroup B <sup>4</sup>
<b>Viability (post-freeze)<sup>2</sup></b>	Growth	Growth

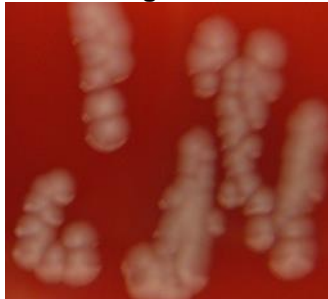
<sup>1</sup>NR-4393 was produced by inoculation of the deposited material into Tryptic Soy broth and grown 24 hours in an aerobic atmosphere. Broth inoculum was added to Kolles which was grown 24 hours at 37°C and aerobic atmosphere to produce this lot.

<sup>2</sup>24 hours at 37°C and aerobic atmosphere on Tryptic Soy agar with 5% defibrinated sheep blood

<sup>3</sup>Additional serological tests are required to determine *Salmonella* species using API<sup>®</sup> 20 E

<sup>4</sup>Serogroup B contains serotype Typhimurium in addition to other serotypes

**Figure 1**



**Date:** 11 SEP 2013

**Signature:** 

**Title:** Technical Manager, BEI Authentication or designee

ATCC<sup>®</sup>, on behalf of BEI Resources, hereby represents and warrants that the material provided under this certificate has been subjected to the tests and procedures specified and that the results described, along with any other data provided in this certificate, are true and accurate to the best of ATCC<sup>®</sup>'s knowledge.

ATCC<sup>®</sup> is a trademark of the American Type Culture Collection.

You are authorized to use this product for research use only. It is not intended for human use.

