

**Respiratory Syncytial Virus (RSV) A2 Matrix 2-1 (M2-1) Helper Plasmid, pA2-M2-1opt**

**Catalog No. NR-36464**

**Product Description:** The M2-1 helper plasmid was constructed from codon-optimized RSV A2 M2-1 sequences. The codon-optimized cDNA sequences were synthesized and cloned into the pcDNA™3.1<sup>(+)</sup> mammalian expression plasmid (Life Technologies™ Invitrogen™).

**Lot<sup>1</sup>: 61047091**

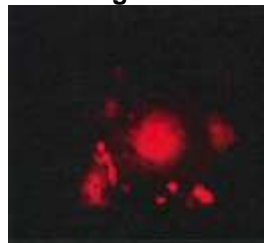
**Manufacturing Date: 31MAR2013**

TEST	SPECIFICATIONS	RESULTS
<b>Appearance</b>	Report results	Clear and colorless
<b>Confirmation of Plasmid Integrity by Restriction Digestion</b> NR-36464 (undigested) NR-36464 ( <i>XhoI</i> and <i>KpnI</i> digested)	Report results 5364 and 593 base pair bands	5957 base pairs 5364 and 593 base pair bands
<b>Functional Activity<sup>2</sup></b> RSV replication in transfected BHK-21 clone BSR T7/5 cells (3 days post-transfection)	Red fluorescent syncytia observed	Red fluorescent syncytia observed (Figure 1)
<b>PicoGreen® Measurement</b> DNA content DNA concentration	0.5 µg 0.1 µg per µL	0.5 µg 0.1 µg per µL
<b>OD<sub>260</sub>/OD<sub>280</sub> Ratio</b>	1.7 to 2.0	1.92
<b>Contamination with <i>E. coli</i> Genomic DNA</b>	< 5%	< 5%
<b>Endotoxin</b>	≤ 50 EU/mL	≤ 0.9 EU/mL
<b>Bioburden [colony forming units (cfu)]</b>	≤ 1 cfu per 5 µL	0 cfu per 5 µL

<sup>1</sup>Produced in *E. coli*, strain 10-beta (New England Biolabs®) and extracted using an Endo-Free Plasmid Maxi Kit (Qiagen)

<sup>2</sup>Recombinant RSV was produced by co-transfection of BHK-21 clone BSR T7/5 cells with NR-36460 and four helper plasmids containing genes for A2 large polymerase (NR-36461), nucleoprotein (NR-36462), phosphoprotein (NR-36463) and matrix 2-1 protein (NR-36464).

**Figure 1**



**Date:** 27 SEP 2013

**Signature:**

*Dorothy C. Young*

**Title:**

Technical Manager, BEI Authentication or designee

ATCC®, on behalf of BEI Resources, hereby represents and warrants that the material provided under this certificate has been subjected by the contractor to the tests and procedures specified and that the results described, along with any other data provided in this certificate, are true and accurate to the best of ATCC®'s knowledge.

ATCC® is a trademark of the American Type Culture Collection.

You are authorized to use this product for research use only. It is not intended for human use.

