

Salmonella enterica subsp. enterica, Strain S8934 (Seroovar Typhimurium)
Catalog No. NR-22071

Product Description: *Salmonella enterica* (*S. enterica*) subsp. *enterica*, strain S8934 was isolated in 2004 from cattle feces in Washington State, USA. *S. enterica* subsp. *enterica*, strain S8934 is a multi-drug resistant strain that is reported to be resistant to ampicillin, chloramphenicol, kanamycin, sulfa-trimethoprim, streptomycin, tetracycline and ceftazidime. Strain S8934 is reported to contain an approximately 110 kilobase pair *bla*_{CMY-2} plasmid.

Lot¹: 61662354
Manufacturing Date: 12APR2013

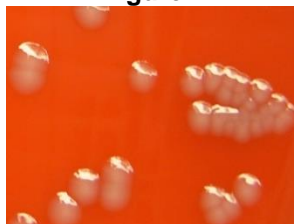
TEST	SPECIFICATIONS	RESULTS
Phenotypic Analysis Cellular morphology Colony morphology ² Analytical profile index (API [®] 20 E) ³	Gram-negative rod Report results Consistent with <i>Salmonella</i> spp.	Gram-negative rod Circular, convex, entire, smooth and gray (Figure 1) Consistent with <i>Salmonella</i> spp.
Genotypic Analysis Sequencing of 16S ribosomal RNA gene (~ 1480 base pairs) Riboprinter [®] Microbial Characterization System	Consistent with <i>S. enterica</i> Consistent with <i>S. enterica</i>	Consistent with <i>S. enterica</i> subsp. <i>enterica</i> Consistent with <i>S. enterica</i> subsp. <i>enterica</i> serovar Typhimurium
Serogroup Analysis	Report results	Serogroup B ⁴
Viability (post-freeze)²	Growth	Growth

¹NR-22071 was produced by inoculation of the deposited material into Tryptic Soy broth and grown 24 hours in an aerobic atmosphere at 37°C. Broth inoculum was added to kolles which was grown 24 hours at 37°C and aerobic atmosphere to produce this lot. Purity of this lot was accessed for 7 days under propagation conditions.

²24 hours at 37°C and aerobic atmosphere on Tryptic Soy agar with 5% defibrinated sheep blood

³Additional serological tests are required to determine *Salmonella* species using API[®] 20 E.

⁴Serogroup B contains serotype Typhimurium in addition to other serotypes.

Figure 1

Date: 07 OCT 2013
Signature:
Title:
Technical Manager, BEI Authentication or designee

ATCC[®], on behalf of BEI Resources, hereby represents and warrants that the material provided under this certificate has been subjected to the tests and procedures specified and that the results described, along with any other data provided in this certificate, are true and accurate to the best of ATCC[®]'s knowledge.

ATCC[®] is a trademark of the American Type Culture Collection.

You are authorized to use this product for research use only. It is not intended for human use.


BEI Resources
www.beiresources.org

E-mail: contact@beiresources.org

Tel: 800-359-7370

Fax: 703-365-2898