

Total RNA from *Biomphalaria glabrata*, Strain BB02

Catalog No. NR-43228

This reagent is the tangible property of the U.S. Government.

Product Description: Total RNA was extracted from *Biomphalaria glabrata* (*B. glabrata*), strain BB02. *B. glabrata* were collected from a small stream in an endemic site of transmission of *Schistosoma mansoni*, in the south east of Brazil, Barreiro, Minas Gerais. Offspring of these snails were maintained as a laboratory strain, designated as BB02.

Lot¹⁻³: 61585369

Manufacturing Date: 13DEC2012

TEST	SPECIFICATIONS	RESULTS
Concentration	Report results	50 µg in 50 µL per vial (1 µg/µL)
OD ₂₆₀ /OD ₂₈₀ Ratio	1.85 to 2.00	1.99
Qualification by RT-PCR Amplification of myoglobin gene ⁴	~ 190 base pair amplicon	~ 190 base pair amplicon (Figure 1)

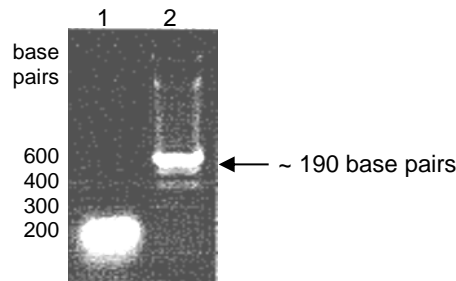
¹QC testing was performed by the Biomedical Research Institute, Rockville, MD (NIH-NIAID Contract HHSN272201000051)

²Total RNA was extracted by RNAzol[®] RT (Molecular Research Center, Inc.) according to the manufacturer's instructions.

³*B. glabrata*, BB02, were treated with 100 µg/mL ampicillin to reduce rotifer and bacterial contamination prior to extraction.

⁴Primers were designed to amplify the nucleotide region 108 to 296 of *B. glabrata* myoglobin gene (GenBank: AY314976).

Figure 1: Amplification of Myoglobin Gene for Qualification by RT-PCR.



Lane 1: 100 base pair ladder

Lane 2: cDNA amplification from 1 µg of NR-43228

Date: 30 SEP 2013

Signature:

Title:

Technical Manager, BEI Authentication or designee

ATCC[®], on behalf of BEI Resources, hereby represents and warrants that the material provided under this certificate has been subjected by the contributor to the tests and procedures specified and that the results described, along with any other data provided in this certificate, are true and accurate to the best of ATCC[®]'s knowledge.

ATCC[®] is a trademark of the American Type Culture Collection.

You are authorized to use this product for research use only. It is not intended for human use.

