

Bacteroides sp., Strain 9_1_42FAA

Catalog No. HM-27

Product Description: *Bacteroides* sp., strain 9_1_42FAA was isolated in 2007 from biopsy tissue taken from the duodenum of a 47-year-old female patient with microscopic colitis in Calgary, Alberta, Canada.

Lot^{1,2}: 61859901

Manufacturing Date: 26JUL2013

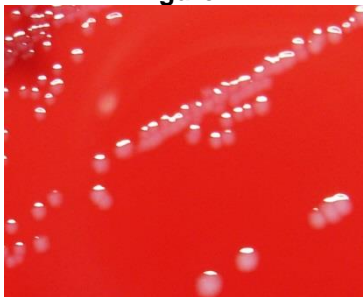
TEST	SPECIFICATIONS	RESULTS
Phenotypic Analysis Cellular morphology Colony morphology ³	Gram-negative rods Report results	Gram-negative rods Circular, entire, convex, smooth and white (Figure 1)
Genotypic Analysis Sequencing of 16S ribosomal RNA gene (~ 1440 base pairs)	≥ 99% identical to GenBank: ACAA01000096 (<i>Bacteroides</i> sp., strain 9_1_42FAA)	≥ 99% identical to GenBank: ACAA01000096 (<i>Bacteroides</i> sp., strain 9_1_42FAA)
Viability (post-freeze)³	Growth	Growth

¹Quality control of HMP material is only performed to demonstrate that the material distributed by BEI Resources is identical to the deposited material. It should not be considered a complete characterization of the deposited organism.

²*Bacteroides* sp., strain 9_1_42FAA was deposited by Professor Emma Allen-Vercoe, Department of Molecular and Cellular Biology, University of Guelph, Guelph, Ontario, Canada. HM-27 was produced by inoculation of the deposited material into Modified Reinforced Clostridial broth and incubated for 48 hours at 37°C in an anaerobic atmosphere (90% N₂:5% CO₂:5% H₂). The material from the initial growth was passaged once in Reinforced Clostridial broth for 48 hours at 37°C in an anaerobic atmosphere to produce this lot. Purity of this lot was assessed for 7 days under propagation conditions.

³48 hours at 37°C in an anaerobic atmosphere on Tryptic Soy agar with 5% defibrinated sheep blood

Figure 1



Date: 16 OCT 2013

Signature:

Title: Technical Manager, BEI Authentication or designee

ATCC®, on behalf of BEI Resources, hereby represents and warrants that the material provided under this certificate has been subjected to the tests and procedures specified and that the results described, along with any other data provided in this certificate, are true and accurate to the best of ATCC®'s knowledge.

ATCC® is a trademark of the American Type Culture Collection.
You are authorized to use this product for research use only. It is not intended for human use.

