

Mycobacterium leprae* Lipoarabinomannan (LAM)*Catalog No. NR-19348**

This reagent is the tangible property of the U.S. Government.

Product Description: NR-19348 is a preparation of lipoarabinomannan (LAM) derived from the cell wall of *Mycobacterium leprae* (*M. leprae*). LAM possesses many biological activities including immunogenicity, induction of TNF and the release of other cytokines, and inhibition of antigen processing. The nonreducing termini of LAM from *M. leprae* are not capped with mannose, unlike that of *M. tuberculosis* H37Rv.

Lot: 61315853**Manufacturing Date: 27FEB2013**

Production and QC testing were performed by Colorado State University. The Colorado State University documentation for lot 12.Mlep.2.12.1.SOS.LAM is attached.

ATCC®, on behalf of BEI Resources, hereby represents and warrants that the material provided under this certificate has been subjected by the contractor to the tests and procedures specified and that the results described, along with any other data provided in this certificate, are true and accurate to the best of ATCC®'s knowledge.

ATCC® is a trademark of the American Type Culture Collection.

You are authorized to use this product for research use only. It is not intended for human use.



WORK SHEET FOR PURIFIED LIPOARABINOMANNAN

General Information

Lot Number: 12.Mlep.2.12.1.SOS.LAM
Species: *Mycobacterium leprae*
Strain: NHDP-55

Purification Information

Starting material (lot #): 3X120, 3X128, 5L79, 5L116, 8T72
Cell amount (wet weight): 200.43 mg
Protocol used (SOP #): PP015.1, PP016.3, PP017.2
Date started: 12-01-2012
Date completed: 02-27-2013
Notebook; pages: Shane Orlin Severs #2; SOS-Lep, CFP; pgs. 29-41
Additional notes (if applicable):

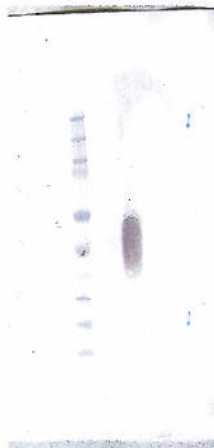
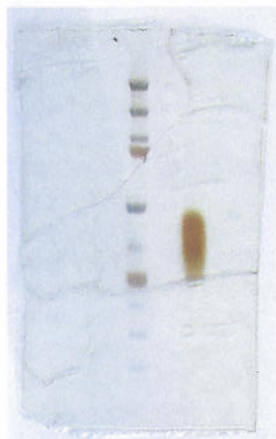
Quality Control Information

Clarity of product: Clear
NMR results: Pass
Endotoxin amount: 4.61 ng ET / mg LAM
GC Results: 0.91 mg/ml
Total volume: 2.41 ml
Silver stain date: 02-25-2013
Western blot date: 02-25-2013

Notebook and page(s): SOS-Lep, CFP; pg. 37
Notebook and page(s): SOS-Lep, CFP; pg. 40
Notebook and page(s): SOS-Lep, CFP; pgs. 38-39
Total amount of LAM: 2.2 mg
Notebook and page(s): SOS-Lep, CFP; pg. 36
Notebook and page(s): SOS-Lep, CFP; pg. 36

Antibody used: CS35

QC Gel and Blot:



Aliquot Information:

22 @ 100 ug
2200 ug total

(Research Associate)

Feb 27th 2013
(date)

(Laboratory Supervisor)

2/27/2013
(date)