

Fraction 1 Capsular Antigen (F1) from *Yersinia pestis*, Expressed in *Escherichia coli*

Catalog No. NR-44223

This reagent is the property of the U. S. Government.

Product Description: NR-44223 is a recombinant form of the *Yersinia pestis* (*Y. pestis*) fraction 1 capsular antigen (F1). A recombinant protein containing an N-terminal hexa-histidine tag and thrombin cleavage site was expressed in *Escherichia coli*, purified by nickel affinity chromatography, and treated with thrombin and subjected to further chromatography steps to remove the histidine tag.

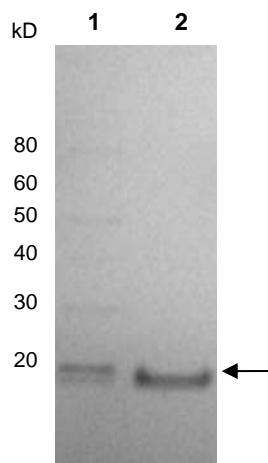
Lot: 62057465

Manufacturing Date: 23SEP2013

TEST	SPECIFICATIONS	RESULTS
Appearance	Clear and colorless, no particulate matter	Clear and colorless, no particulate matter
Purity by SDS-PAGE densitometer scan	~ 18 kDa band represents > 90% of total staining intensity above background	~ 18 kDa band represents 95% of total staining intensity above background (Figure 1)
Identification by Western Blot Analysis Monoclonal anti- <i>Y. pestis</i> F1 ¹	Reactive	Reactive (Figure 2)
Concentration by Bicinchoninic Acid Protein Assay	Report results	0.514 mg per mL
Final Product Quantity per vial Volume per vial	Report results Report results	200 µg 390 µL
Endotoxin Content (Limulus Amoebocyte Lysate Assay)	Report results	≤ 74 EU/mg
Filtration	0.45 µm filtered	0.45 µm filtered

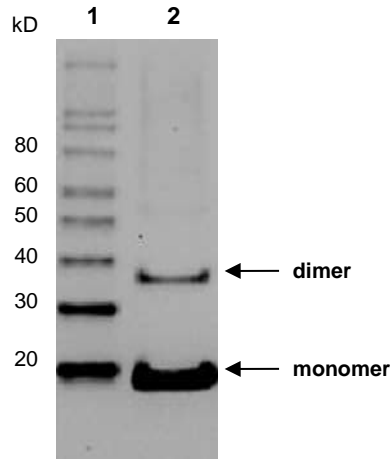
¹YPF19, Santa Cruz Biotechnology sc-52303

Figure 1 — SDS-PAGE



Lane 1 – Invitrogen™ MagicMark™ XP Western Protein Standard
Lane 2 – NR-44223 (~ 1 µg)

Figure 2 — Western Blot



Lane 1 – Invitrogen™ MagicMark™ XP Western Protein Standard
Lane 2 – NR-44223 (~ 1 µg)

Date: 30 OCT 2013

Signature:

Title: Technical Manager, BEI Authentication or designee

ATCC®, on behalf of BEI Resources, hereby represents and warrants that the material provided under this certificate has been subjected to the tests and procedures specified and that the results described, along with any other data provided in this certificate, are true and accurate to the best of ATCC®'s knowledge.

ATCC® is a trademark of the American Type Culture Collection.

You are authorized to use this product for research use only. It is not intended for human use.

