

**Genomic RNA from Human Respiratory Syncytial Virus, A2001/3-12**

**Catalog No. NR-44227**

**Product Description:** Genomic RNA was isolated from a preparation of cell lysate and supernatant from HEp-2 cells<sup>1</sup> infected with human respiratory syncytial virus (RSV), A2001/3-12.

**Lot<sup>2</sup>: 61929097**

**Manufacturing Date: 14AUG2013**

TEST	SPECIFICATIONS	RESULTS
<b>Sequencing of Species-Specific Region (843 nucleotides)</b>	Consistent with human RSV, A2001/3-12 virus  Identical to NR-28526	99% identity with human RSV, A2001/3-12 virus (GenBank: JX069799)  Identical to NR-28526
<b>Functional Activity by RT-PCR Amplification<sup>3</sup></b>	~ 900 bp amplicon	~ 900 bp amplicon (See Figure 1)
<b>Total RNA Content by RiboGreen<sup>®</sup> Measurement (Viral, Cellular and Carrier)</b>	Report results	201 ng per 100 µL
<b>Virus Inactivation</b> 10% of total yield inoculated on HEp-2 cells <sup>1</sup> and evaluated for cytopathic effect and expression of viral antigens <sup>4,5</sup>	No virus detected	No virus detected

<sup>1</sup>HEp-2 cells: ATCC<sup>®</sup> CCL-23<sup>™</sup>

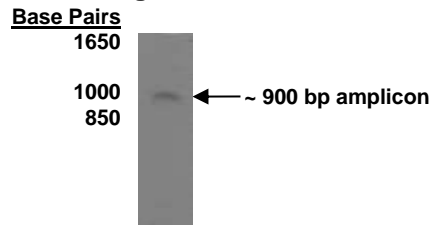
<sup>2</sup>Nucleic acid was extracted from a preparation of Human Respiratory Syncytial Virus, A2001/3-12 (BEI Resources NR-28526, Lot 59927449), using a QIAamp<sup>®</sup> Viral RNA Mini Kit (Qiagen 52906).

<sup>3</sup>Amplified using iScript<sup>™</sup> One-Step RT-PCR Kit with SYBR<sup>®</sup> Green (Bio-Rad 170-8893) with 2 µL of NR-44227 in a 25 µL reaction

<sup>4</sup>Using LIGHT DIAGNOSTICS<sup>™</sup> Respiratory Syncytial Virus FITC Reagent (Millipore 5022)

<sup>5</sup>Use of the QIAamp<sup>®</sup> Viral RNA Mini Kit has been demonstrated to consistently inactivate 100% of human respiratory syncytial virus, as shown by the absence of cytopathic effect (CPE) and expression of viral antigens after plating the entire extract on virus-susceptible cells.

**Figure 1**



**Date:** 04 NOV 2013

**Signature:**

**Title:**

Technical Manager, BEI Authentication or designee

ATCC<sup>®</sup>, on behalf of BEI Resources, hereby represents and warrants that the material provided under this certificate has been subjected to the tests and procedures specified and that the results described, along with any other data provided in this certificate, are true and accurate to the best of ATCC<sup>®</sup>'s knowledge.

ATCC<sup>®</sup> is a trademark of the American Type Culture Collection.

You are authorized to use this product for research use only. It is not intended for human use.

