

**Total RNA from *Schistosoma mansoni*, Strain NMRI, Pooled Miracidia**

**Catalog No. NR-41320**

This reagent is the tangible property of the U.S. Government.

**Product Description:** Total RNA was extracted from *Schistosoma mansoni* (*S. mansoni*), strain NMRI, pooled miracidia. The miracidia were recovered from *S. mansoni* eggs in mice that had been infected with *S. mansoni* cercariae.

**Lot<sup>1,2</sup>: 61895563**

**Manufacturing Date: 04JUN2013**

| TEST  | SPECIFICATIONS           | RESULTS                                |
|---|--------------------------|--|
| Concentration   | Report results           | 0.5 µg in 20 µL per vial (0.025 µg/µL) |
| OD <sub>260</sub> /OD <sub>280</sub> Ratio                                      | 1.85 to 2.0              | 1.92                                   |
| Qualification by RT-PCR<br>Amplification of 28S ribosomal RNA gene <sup>3</sup> | ~ 290 base pair amplicon | ~ 290 base pair amplicon (Figure 1)    |

<sup>1</sup>QC testing was performed by the Biomedical Research Institute, Rockville, MD (NIH-NIAID Contract HHSN272201000005I)

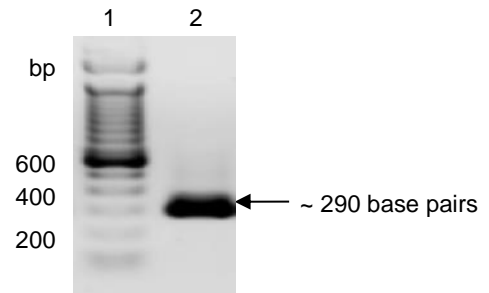
<sup>2</sup>Total RNA was extracted by RNAzol<sup>®</sup> RT (Molecular Research Center, Inc.) according to the manufacturer's instructions.

<sup>3</sup>Primers were designed to amplify the nucleotide region 39 to 326 of *S. mansoni* 28S ribosomal RNA gene (GenBank Z46503.1).

**Figure 1: Amplification of 28S Ribosomal RNA Gene for Qualification by RT-PCR.**

Lane 1: 100 base pair ladder

Lane 2: 290 base pair amplicon from *S. mansoni* 28S ribosomal RNA gene



**Date:** 01 NOV 2013

**Signature:**

**Title:**

Technical Manager, BEI Authentication or designee

ATCC<sup>®</sup>, on behalf of BEI Resources, hereby represents and warrants that the material provided under this certificate has been subjected by the contributor to the tests and procedures specified and that the results described, along with any other data provided in this certificate, are true and accurate to the best of ATCC<sup>®</sup>'s knowledge.

ATCC<sup>®</sup> is a trademark of the American Type Culture Collection.

You are authorized to use this product for research use only. It is not intended for human use.

