

**Total RNA from *Schistosoma mansoni*, Strain NMRI, Pooled Cercariae**

**Catalog No. NR-29371**

This reagent is the tangible property of the U.S. Government.

**Product Description:** Total RNA was extracted from *Schistosoma mansoni* (*S. mansoni*), strain NMRI, pooled cercariae.

**Lot<sup>1,2</sup>: 121016-2**

**Manufacturing Date: 16OCT2012**

TEST	SPECIFICATIONS	RESULTS
Concentration	Report results	1 µg in 20 µL per vial (0.05 µg/µL)
OD <sub>260</sub> /OD <sub>280</sub> Ratio	1.85 to 2.0	1.96
Qualification by RT-PCR Amplification of 28S ribosomal RNA gene <sup>3</sup>	~ 290 base pair amplicon	~ 290 base pair amplicon (Figure 1)

<sup>1</sup>QC testing was performed by the Biomedical Research Institute, Rockville, MD (NIH-NIAID Contract HHSN2722010000051)

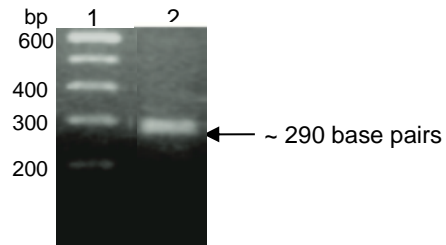
<sup>2</sup>Total RNA was extracted by RNAzol<sup>®</sup> RT (Molecular Research Center, Inc.) according to the manufacturer's instructions.

<sup>3</sup>Primers were designed to amplify the nucleotide region 39 to 326 of *S. mansoni* 28S ribosomal RNA gene (GenBank Z46503.1). Cross-amplification of the 28S gene from other *Schistosoma* species has been observed.

**Figure 1: Amplification of 28S Ribosomal RNA Gene for Qualification by RT-PCR**

Lane 1: 100 base pair ladder

Lane 2: 288 base pair amplicon from *S. mansoni* 28S ribosomal RNA gene



**Date:** 31 OCT 2013

**Signature:**

**Title:**

Technical Manager, BEI Authentication or designee

ATCC<sup>®</sup>, on behalf of BEI Resources, hereby represents and warrants that the material provided under this certificate has been subjected by the contributor to the tests and procedures specified and that the results described, along with any other data provided in this certificate, are true and accurate to the best of ATCC<sup>®</sup>'s knowledge.

ATCC<sup>®</sup> is a trademark of the American Type Culture Collection.

You are authorized to use this product for research use only. It is not intended for human use.

