

**Complementary DNA from *Biomphalaria glabrata*, Strain BS-90**

**Catalog No. NR-44212**

This reagent is the tangible property of the U.S. Government.

**Product Description:** Complementary DNA (cDNA) was synthesized from RNA extracted from *Biomphalaria glabrata* (*B. glabrata*), strain BS-90.

**Lot<sup>1-3</sup>: 61895553**

**Manufacturing Date: 28MAY2013**

TEST	SPECIFICATIONS	RESULTS
Concentration	Report results	0.5 µg in 20 µL per vial (0.025 µg/µL)
OD <sub>260</sub> /OD <sub>280</sub> Ratio	1.80 to 2.00	2.00
Qualification by RT-PCR Amplification of myoglobin gene <sup>4</sup>	~ 190 base pair amplicon	~ 190 base pair amplicon (Figure 1)

<sup>1</sup>QC testing was performed by the Biomedical Research Institute, Rockville, MD (NIH-NIAID Contract HHSN272201000005I)

<sup>2</sup>Snails were treated with 100 µg/mL ampicillin overnight to reduce rotifer and bacterial contamination

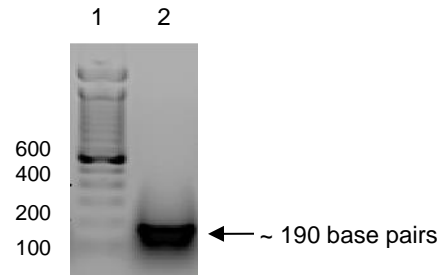
<sup>3</sup>cDNA was amplified from total RNA by SMART™ cDNA Synthesis Kit (Clontech) according to the manufacturer's instructions.

<sup>4</sup>Primers were designed to amplify the nucleotide region 108 to 296 of *B. glabrata* myoglobin gene (GenBank AY314976).

**Figure 1: Amplification of Myoglobin Gene for Qualification by RT-PCR**

Lane 1: 100 base pair ladder

Lane 2: 190 base pair amplicon from *B. glabrata* myoglobin gene



**Date:** 18 OCT 2013

**Signature:**

**Title:**

Technical Manager, BEI Authentication or designee

ATCC®, on behalf of BEI Resources, hereby represents and warrants that the material provided under this certificate has been subjected by the contributor to the tests and procedures specified and that the results described, along with any other data provided in this certificate, are true and accurate to the best of ATCC®'s knowledge.

ATCC® is a trademark of the American Type Culture Collection.

You are authorized to use this product for research use only. It is not intended for human use.

