

Salmonella enterica subsp. enterica, Strain SARA29 (CDC B1400) (Serovar Saint Paul)

Catalog No. NR-28785

Product Description: *Salmonella enterica* (*S. enterica*) subsp. *enterica* strain SARA29 (also referred to as strain CDC B1400) was isolated from human feces in Florida, USA. This strain is reported to be antibiotic-susceptible.

Lot¹: 61664486

Manufacturing Date: 24APR2013

TEST	SPECIFICATIONS	RESULTS
Phenotypic Analysis Cellular morphology Colony morphology ² Analytical profile index (API [®] 20 E) ³	Gram-negative rods Report results Consistent with <i>Salmonella</i> spp.	Gram-negative rods Circular, convex, entire, smooth and cream (Figure 1) Consistent with <i>Salmonella</i> spp.
Genotypic Analysis Sequencing of 16S ribosomal RNA gene (~ 1500 base pairs)	Consistent with <i>S. enterica</i>	Consistent with <i>S. enterica</i> subsp. <i>enterica</i>
Serogroup Analysis	Report results	Serogroup B ⁴
Viability (post-freeze)²	Growth	Growth

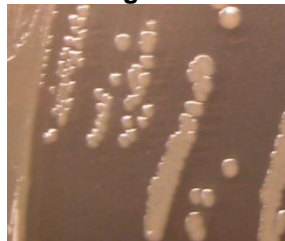
¹NR-28785 was produced by inoculation of the deposited material into Nutrient broth and incubated 24 hours at 37°C in an aerobic atmosphere. Broth inoculum was added to kolles, which were incubated for 24 hours at 37°C in an aerobic atmosphere to produce this lot. Purity of this lot was assessed for 7 days under propagation conditions.

²24 hours at 37°C in an aerobic atmosphere on Nutrient agar

³Additional serological tests are required to determine *Salmonella* species using API[®] 20 E.

⁴Serogroup B contains serovar Saint Paul in addition to other serovars [Ng, S. P., et al. "Detection and Serogroup Differentiation of *Salmonella* spp. in Food within 30 Hours by Enrichment-Immunoassay with a T6 Monoclonal Antibody Capture Enzyme-Linked Immunosorbent Assay." *Appl. Environ. Microbiol.* 62 (1996): 2794-2302. PubMed: 8779567.].

Figure 1



Date: 06 NOV 2013

Signature:

Title: Technical Manager, BEI Authentication or designee

ATCC[®], on behalf of BEI Resources, hereby represents and warrants that the material provided under this certificate has been subjected to the tests and procedures specified and that the results described, along with any other data provided in this certificate, are true and accurate to the best of ATCC[®]'s knowledge.

ATCC[®] is a trademark of the American Type Culture Collection.

You are authorized to use this product for research use only. It is not intended for human use.

