

Enterococcus faecium, Strain U0317

Catalog No. NR-28982

Product Description: *Enterococcus faecium* (*E. faecium*), strain U0317 is an infectious clinical isolate collected from a hospitalized patient suffering from a urinary tract infection in the Netherlands in 2005. This strain contains point mutations in the *gyrA* gene, that confer resistance to ampicillin, and in the *parC* and *pbp5* genes, that confer resistance to ciprofloxacin.

Lot¹: 61956013

Manufacturing Date: 23AUG2013

TEST	SPECIFICATIONS	RESULTS
Phenotypic Analysis Cellular morphology Colony morphology ² Analytical profile index (API [®] 20 Strep) Hemolysis on blood agar ³	Gram-positive cocci Report results Consistent with <i>E. faecium</i> Non-hemolytic or α -hemolytic	Gram-positive cocci Circular, low convex, entire, smooth and cream (Figure 1) Consistent with <i>E. faecium</i> α -hemolytic
Genotypic Analysis Sequencing of 16S ribosomal RNA gene (~ 920 base pairs)	Consistent with <i>E. faecium</i>	Consistent with <i>E. faecium</i> ⁴
Viability (post-freeze)²	Growth	Growth

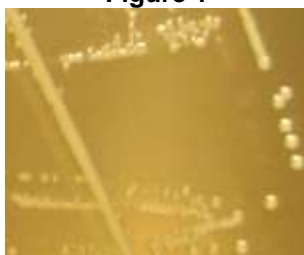
¹*E. faecium*, strain U0317 was deposited by Willem van Schaik, Department of Medical Microbiology, University Medical Center Utrecht, Utrecht, The Netherlands. NR-28982 was produced by inoculation of the deposited material into Tryptic Soy broth and incubated for 24 hours at 37°C in an aerobic atmosphere. Broth inoculum was added to kolles, which were grown 24 hours at 37°C in an aerobic atmosphere to produce this lot. Purity of this lot was assessed for 7 days under propagation conditions.

²24 hours at 37°C in an aerobic atmosphere on Tryptic Soy agar

³24 hours at 37°C in an aerobic atmosphere on Tryptic Soy agar with 5% defibrinated sheep blood

⁴≥ 99% identical to GenBank: ABSW01000109 (*E. faecium*, strain U0317)

Figure 1



Date: 13 NOV 2013

Signature:

Title:

Technical Manager, BEI Authentication or designee

ATCC[®], on behalf of BEI Resources, hereby represents and warrants that the material provided under this certificate has been subjected to the tests and procedures specified and that the results described, along with any other data provided in this certificate, are true and accurate to the best of ATCC[®]'s knowledge.

ATCC[®] is a trademark of the American Type Culture Collection.

You are authorized to use this product for research use only. It is not intended for human use.

