

**Total RNA from *Biomphalaria glabrata*, Strain M-Line**

**Catalog No. NR-43230**

This reagent is the tangible property of the U.S. Government.

**Product Description:** Total RNA was extracted from *Biomphalaria glabrata* (*B. glabrata*), strain M-line, which is descended from a cross between a *Schistosoma mansoni* (*S. mansoni*) resistant albino strain of *B. glabrata*, collected in Brazil, and a *S. mansoni* susceptible pigmented strain of *B. glabrata*, collected in Puerto Rico in 1944.

**Lot<sup>1-3</sup>: 61585367**

**Manufacturing Date: 11DEC2012**

TEST	SPECIFICATIONS	RESULTS
Concentration	Report results	50 µg in 50 µL per vial (1 µg/µL)
OD <sub>260</sub> /OD <sub>280</sub> Ratio	1.85 to 2.00	2.00
Qualification by RT-PCR Amplification of myoglobin gene <sup>4</sup>	~ 190 base pair amplicon	~ 190 base pair amplicon (Figure 1)

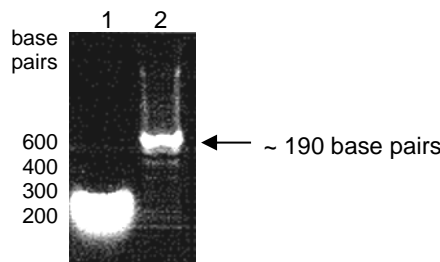
<sup>1</sup>QC testing was performed by the Biomedical Research Institute, Rockville, MD (NIH-NIAID Contract HHSN272201000005I)

<sup>2</sup>Total RNA was extracted by RNAzol<sup>®</sup> RT (Molecular Research Center, Inc.) according to the manufacturer's instructions.

<sup>3</sup>*B. glabrata*, M-line, were treated with 100 µg/mL ampicillin to reduce rotifer and bacterial contamination prior to extraction.

<sup>4</sup>Primers were designed to amplify the nucleotide region 108 to 296 of *B. glabrata* myoglobin gene (GenBank: AY314976).

**Figure 1: Amplification of Myoglobin Gene for Qualification by RT-PCR.**



Lane 1: 100 base pair ladder

Lane 2: cDNA amplification from 1 µg of NR-43230

**Date:** 30 SEP 2013

**Signature:**

**Title:** Technical Manager, BEI Authentication or designee

ATCC<sup>®</sup>, on behalf of BEI Resources, hereby represents and warrants that the material provided under this certificate has been subjected by the contributor to the tests and procedures specified and that the results described, along with any other data provided in this certificate, are true and accurate to the best of ATCC<sup>®</sup>'s knowledge.

ATCC<sup>®</sup> is a trademark of the American Type Culture Collection.

You are authorized to use this product for research use only. It is not intended for human use.

