

**Enterococcus faecalis, Strain V587**

**Catalog No. NR-31979**

**Product Description:** *Enterococcus faecalis* (*E. faecalis*), strain V587 was recovered in a urine specimen collected on February 26, 1987, at Barnes Hospital, St. Louis, Missouri, USA. This strain has shown resistance to vancomycin.

**Lot<sup>1</sup>: 61913293**

**Manufacturing Date: 31JUL2013**

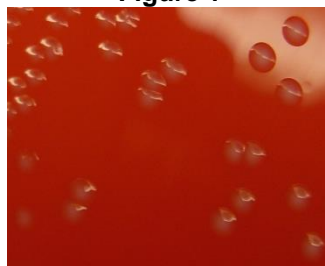
TEST	SPECIFICATIONS	RESULTS
<b>Phenotypic Analysis</b> Cellular morphology Colony morphology <sup>2</sup>  Hemolysis on blood agar <sup>2</sup> Motility (wet mount) Analytical profile index (API <sup>®</sup> 20 Strep)	Gram-positive cocci Report results  Non-hemolytic or $\alpha$ -hemolytic Report results Consistent with <i>E. faecalis</i>	Gram-positive cocci Circular, convex, entire, smooth and white (Figure 1) $\alpha$ -hemolytic Non-motile Consistent with <i>E. faecalis</i>
<b>Genotypic Analysis</b> Sequencing of 16S ribosomal RNA gene (~ 920 base pairs)	Consistent with <i>E. faecalis</i>	Consistent with <i>E. faecalis</i> <sup>3</sup>
<b>Viability (post-freeze)<sup>2</sup></b>	Growth	Growth

<sup>1</sup>*E. faecalis*, strain V587 was deposited by Michael S. Gilmore, Ph.D., Sir William Osler Professor of Ophthalmology, Department of Ophthalmology, Massachusetts Eye and Ear Infirmary, Boston, Massachusetts, USA. NR-31979 was produced by inoculation of the deposited material into Tryptic Soy broth and incubated for 24 hours at 37°C in an aerobic atmosphere. Broth inoculum was added to kolles, which were grown 24 hours at 37°C in an aerobic atmosphere to produce this lot. Purity of this lot was assessed for 7 days under propagation conditions.

<sup>2</sup>24 hours at 37°C in an aerobic atmosphere on Tryptic Soy agar with 5% defibrinated sheep blood

<sup>3</sup>≥ 99% identical to GenBank: AJBB01000019 (*E. faecalis*, strain V587)

**Figure 1**



**Date:** 25 NOV 2013

**Signature:**

**Title:** Technical Manager, BEI Authentication or designee

ATCC<sup>®</sup>, on behalf of BEI Resources, hereby represents and warrants that the material provided under this certificate has been subjected to the tests and procedures specified and that the results described, along with any other data provided in this certificate, are true and accurate to the best of ATCC<sup>®</sup>'s knowledge.

ATCC<sup>®</sup> is a trademark of the American Type Culture Collection.

You are authorized to use this product for research use only. It is not intended for human use.

