

Lactobacillus iners, Strain Lactin V 09 (V1)-c

Catalog No. HM-702

Product Description: *Lactobacillus iners* (*L. iners*), strain Lactin V 09 (V1)-c was isolated from a human vagina.

Lot^{1,2}: 61881801

Manufacturing Date: 30JUL2013

TEST	SPECIFICATIONS	RESULTS
Phenotypic Analysis Cellular morphology Colony morphology ^{3,4} Motility (wet mount)	Gram-positive rods Report results Report results	Gram-positive rods Circular, slightly peaked, undulate, smooth and gray (Figure 1) Non-motile
Genotypic Analysis Sequencing of 16S ribosomal RNA gene (~ 1510 base pairs)	≥ 99% identical to GenBank: AEHO01000002 [<i>L. iners</i> , strain Lactin V 09 (V1)-c]	≥ 99% identical to GenBank: AEHO01000002 [<i>L. iners</i> , strain Lactin V 09 (V1)-c]
Viability (post-freeze)³	Growth	Growth

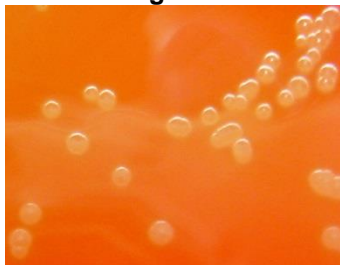
¹Quality control of HMP material is only performed to demonstrate that the material distributed by BEI Resources is identical to the deposited material. It should not be considered a complete characterization of the deposited organism.

²*L. iners*, strain Lactin V 09 (V1)-c was deposited by Sharon L. Hillier, Department of Obstetrics, Gynecology and Reproductive Sciences, Magee-Womens Research Institute, University of Pittsburgh, Pittsburgh, Pennsylvania. HM-702 was produced by inoculation of the deposited material into Lactobacilli MRS broth and incubated for 72 hours at 37°C in an anaerobic atmosphere (90% N₂:5% CO₂:5% H₂). Broth inoculum was added to Tryptic Soy agar with 5% defibrinated sheep blood kolles, and grown for 48 hours at 37°C in an anaerobic atmosphere to produce this lot. Purity of this lot was assessed for 7 days under propagation conditions.

³72 hours at 37°C in an anaerobic atmosphere on Tryptic Soy agar with 5% defibrinated sheep blood

⁴Colonies were observed under anaerobic and aerobic with 5% CO₂ atmospheric conditions when HM-702 was grown on Tryptic Soy agar with 5% defibrinated sheep blood for 72 hours. The 16S gene of each colony type was sequenced, the sequence of both colonies were identical and were consistent with *L. iners*. *L. iners* is a facultative anaerobe and the presence of growth in an aerobic atmosphere with 5% CO₂ is not unexpected.

Figure 1



Date: 27 NOV 2013

Signature:

Title: Technical Manager, BEI Authentication or designee

ATCC®, on behalf of BEI Resources, hereby represents and warrants that the material provided under this certificate has been subjected to the tests and procedures specified and that the results described, along with any other data provided in this certificate, are true and accurate to the best of ATCC®'s knowledge.

ATCC® is a trademark of the American Type Culture Collection. You are authorized to use this product for research use only. It is not intended for human use.

