

***Lachnospiraceae* sp., Strain ICM7**

**Catalog No. HM-768**

**Product Description:** *Lachnospiraceae* sp., strain ICM7 was isolated from a subgingival oral biofilm of a patient.

**Lot<sup>1,2</sup>: 61881826**

**Manufacturing Date: 23AUG2013**

TEST	SPECIFICATIONS	RESULTS
<b>Phenotypic Analysis</b> Cellular morphology <sup>3</sup> Colony morphologies <sup>4,5</sup>  Motility (wet mount)	Report results Report results  Report results	Gram-variable rods Colony type 1: Irregular, low convex undulate, opaque, rough and cream (Figure 1) Colony type 2: Circular, flat, undulate, opaque, rough and white (Figure 1) Motile
<b>Genotypic Analysis</b> Sequencing of 16S ribosomal RNA gene (~ 940 base pairs)	≥ 99% identical to GenBank: ALJL01000028 ( <i>Lachnospiraceae</i> sp., strain ICM7)	≥ 99% identical to GenBank: ALJL01000028 ( <i>Lachnospiraceae</i> sp., strain ICM7)
<b>Viability (post-freeze)<sup>5</sup></b>	Growth	Growth

<sup>1</sup>Quality control of HMP material is only performed to demonstrate that the material distributed by BEI Resources is identical to the deposited material. It should not be considered a complete characterization of the deposited organism.

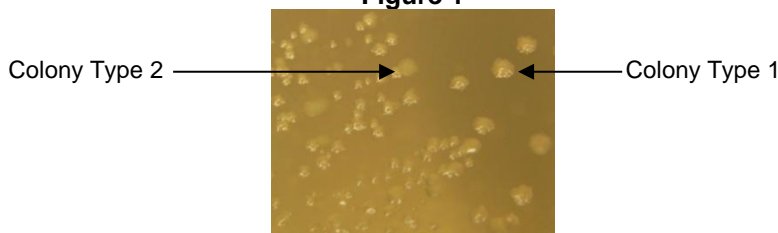
<sup>2</sup>*Lachnospiraceae* sp., strain ICM7 was deposited by Maria V. Sizova, Ph.D., Department of Biology, Northeastern University, Boston, Massachusetts, USA. HM-768 was produced by inoculation of the deposited material into Modified Reinforced Clostridial broth and incubated for 48 hours at 37°C and anaerobic atmosphere (90% N<sub>2</sub>:5% CO<sub>2</sub>:5% H<sub>2</sub>). The material from the initial growth was passaged once in Modified Reinforced Clostridial broth for 48 hours at 37°C and anaerobic atmosphere to produce this lot. Purity of this lot was assessed for 7 days under propagation conditions.

<sup>3</sup>*Lachnospiraceae* species have a Gram-positive cell wall but may stain Gram-variable or Gram-negative; see Lawson, P. A., et al. "Anaerobes: A Piece in the Puzzle for Alternative Biofuels." *Anaerobe* 17 (2011): 206-210. PubMed: 21699990.

<sup>4</sup>Two colony types were observed on plating. Attempts to isolate the individual colony types showed that they reverted to colony type 1.

<sup>5</sup>48 hours at 37°C and anaerobic atmosphere on Modified Reinforced Clostridial agar

**Figure 1**



**Date:** 27 NOV 2013

**Signature:** 

**Title:** Technical Manager, BEI Authentication or designee

ATCC®, on behalf of BEI Resources, hereby represents and warrants that the material provided under this certificate has been subjected to the tests and procedures specified and that the results described, along with any other data provided in this certificate, are true and accurate to the best of ATCC®'s knowledge.

ATCC® is a trademark of the American Type Culture Collection. You are authorized to use this product for research use only. It is not intended for human use.

