

**Monoclonal Anti-*Mycobacterium tuberculosis* PGI (Gene Rv0946c), Clone IT-43 (HBT3)
(produced *in vitro*)****Catalog No. NR-13650**

This reagent is the tangible property of the U.S. Government.

Product Description:

Antibody Designation (Original Designation): IT-43 (HBT3)

Monoclonal antibody to *Mycobacterium tuberculosis*, strain H37Rv probable glucose-6-phosphate isomerase (PGI) was produced in cell culture using a B cell hybridoma generated by the fusion of myeloma cells with immunized mouse splenocytes.

Lot: 61926213**Manufacturing Date: 30SEP2011**

Production and QC testing were performed by Colorado State University (CSU). The CSU documentation for lot 11.IT.43.9.28.Rv0946c.mm is attached. This lot was aliquoted at ATCC[®].

ATCC[®], on behalf of BEI Resources, hereby represents and warrants that the material provided under this certificate has been subjected by the contractor to the tests and procedures specified and that the results described, along with any other data provided in this certificate, are true and accurate to the best of ATCC[®]'s knowledge.

ATCC[®] is a trademark of the American Type Culture Collection.

You are authorized to use this product for research use only. It is not intended for human use.



TB Contract Antibody QC Sheet

General Information:

BEI Item Number: NR-13650

Product: IT-43 Mouse Monoclonal Antibody against Rv0946c (pgi, 59 kDa protein)

Lot Number: 11.IT.43.9.28.Rv0946c.mm

Species: *Mycobacterium tuberculosis*

Strain: H37Rv

Type: Culture Supernatant

Production Information:

Cell Line: _____ SOP#: _____

Notebook/pp: _____

Amount of CS Harvested: _____

Clarity: clear

IgG Purification: _____ SOP#: _____ Notebook/pp: _____, _____

QC Information:

Tested Against: Subcellular Fractions SOP#: AB102

Notebook/pp: Keri Wright, Antibody Notebook, pg1-13

Titer: 1:50

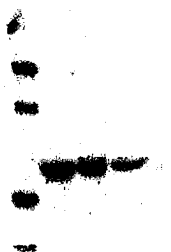
Western blot: X

ELISA: _____

Special Instructions:

QC Western blot:

1. Protein Standard
2. CYT
3. CFP
4. MEM
5. CW



Aliquot Information: 1 x 80 ml

Keri Wright 9/30/11
Research Associate / Date

[Signature] 9/30/11
Lab Supervisor / Date