

Enterococcus faecium, Strain E0164
Catalog No. NR-31915

Product Description: *Enterococcus faecium* (*E. faecium*), strain E0164 was isolated in 1996 from turkey feces in the Netherlands. The E0164 strain is reported to be resistant to gentamicin and vancomycin.

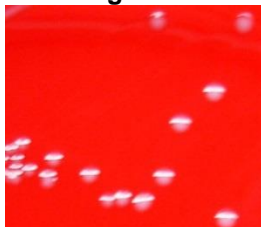
Lot¹: 61956009
Manufacturing Date: 11SEP2013

TEST	SPECIFICATIONS	RESULTS
Phenotypic Analysis Cellular morphology Colony morphology ² Hemolysis ² Motility (wet mount) Analytical profile index (API [®] 20 Strep)	Gram-positive cocci Report results Non-hemolytic or α -hemolytic Report results Consistent with <i>E. faecium</i>	Gram-positive cocci Circular, low convex, entire, smooth and gray (Figure 1) α -hemolytic Non-motile Consistent with <i>E. faecium</i>
Genotypic Analysis Sequencing of 16S ribosomal RNA gene (~ 1460 base pairs)	Consistent with <i>E. faecium</i>	Consistent with <i>E. faecium</i> ³
Viability (post-freeze)²	Growth	Growth

¹*E. faecium*, strain E0164 (also referred to as EnGen0010) was deposited by Michael S. Gilmore, Sir William Osler Professor of Ophthalmology, Department of Ophthalmology, Massachusetts Eye and Ear Infirmary, Boston, Massachusetts, USA. NR-31915 was produced by inoculation of the deposited material into Tryptic Soy broth and incubated for 24 hours at 37°C in an aerobic atmosphere. Broth inoculum was added to kolles (Tryptic Soy agar with 5% defibrinated sheep blood), which were grown 24 hours at 37°C in an aerobic atmosphere to produce this lot. Purity of this lot was assessed for 7 days under propagation conditions.

²24 hours at 37°C in an aerobic atmosphere on Tryptic Soy agar with 5% defibrinated sheep blood

³≥ 99% identical to GenBank: AHWJ01000047 (*E. faecium*, strain E0164)

Figure 1

Date: 05 DEC 2013

Signature:
Title:

Technical Manager, BEI Authentication or designee

ATCC[®], on behalf of BEI Resources, hereby represents and warrants that the material provided under this certificate has been subjected to the tests and procedures specified and that the results described, along with any other data provided in this certificate, are true and accurate to the best of ATCC[®]'s knowledge.

ATCC[®] is a trademark of the American Type Culture Collection.

You are authorized to use this product for research use only. It is not intended for human use.

