

Enterococcus faecalis, Strain HH22

Catalog No. NR-31973

Product Description: *Enterococcus faecalis* (*E. faecalis*), strain HH22 was isolated was isolated in 1981 from a clinical urine specimen submitted to the microbiology laboratory of Hermann Hospital in Houston, Texas, USA. It is reported to be the first known β -lactamase-producing isolate and shows resistance to penicillin, erythromycin, tetracycline and high levels of aminoglycosides.

Lot¹: 62038745

Manufacturing Date: 18SEP2013

TEST	SPECIFICATIONS	RESULTS
Phenotypic Analysis Cellular morphology Colony morphology ² Hemolysis ³ Motility (wet mount) Analytical profile index (API [®] 20 Strep)	Gram-positive cocci Report results Non-hemolytic or α -hemolytic Report results Consistent with <i>E. faecalis</i>	Gram-positive cocci Circular, low convex, entire, smooth and white (Figure 1) Non-hemolytic Non-motile Consistent with <i>E. faecalis</i>
Genotypic Analysis Sequencing of 16S ribosomal RNA gene (~ 1510 base pairs)	Consistent with <i>E. faecalis</i>	Consistent with <i>E. faecalis</i> ⁴
Viability (post-freeze)²	Growth	Growth

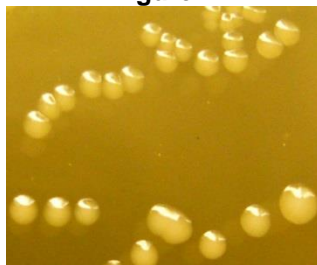
¹*E. faecalis*, strain HH22 (also referred to as TX0921 or EnGen0297) was deposited by Michael S. Gilmore, Ph.D., Sir William Osler Professor of Ophthalmology, Department of Ophthalmology, Massachusetts Eye and Ear Infirmary, Boston, Massachusetts, USA. NR-31973 was produced by inoculation of the deposited material into Brain Heart Infusion broth and incubated for 24 hours at 37°C in an aerobic atmosphere. Broth inoculum was added to kolles (Brain Heart Infusion agar), which were grown 24 hours at 37°C in an aerobic atmosphere to produce this lot. Purity of this lot was assessed for 7 days under propagation conditions.

²24 hours at 37°C in an aerobic atmosphere on Brain Heart Infusion agar

³24 hours at 37°C in an aerobic atmosphere on Tryptic Soy agar with 5% defibrinated sheep blood

⁴≥ 99% identical to GenBank: ACIX01000001 and AJDY01000017 (*E. faecalis*, strain HH22)

Figure 1



Date: 12 DEC 2013

Signature:

Title: Technical Manager, BEI Authentication or designee

ATCC[®], on behalf of BEI Resources, hereby represents and warrants that the material provided under this certificate has been subjected to the tests and procedures specified and that the results described, along with any other data provided in this certificate, are true and accurate to the best of ATCC[®]'s knowledge.

ATCC[®] is a trademark of the American Type Culture Collection.

You are authorized to use this product for research use only. It is not intended for human use.

