

Enterococcus faecium, Strain HF50106

Catalog No. NR-32054

Product Description: *Enterococcus faecium* (*E. faecium*), strain HF50106 was isolated in 2008 from swine feces in Michigan, USA. *E. faecium*, strain HF50106 is reported to be resistant to erythromycin, tetracycline and vancomycin; and susceptible to ampicillin, ciprofloxacin, gentamicin and linezolid. Strain HF50106 does not produce β -lactamase and tested negative for the *esp* and *hyl* virulence genes.

Lot¹: 62038771

Manufacturing Date: 27SEP2013

TEST	SPECIFICATIONS	RESULTS
Phenotypic Analysis Cellular morphology Colony morphology ² Hemolysis ³ Motility (wet mount) Analytical profile index (API [®] 20 Strep)	Gram-positive cocci Report results Non-hemolytic or α -hemolytic Report results Consistent with <i>E. faecium</i>	Gram-positive cocci Circular, convex, entire, smooth and cream (Figure 1) α -hemolytic Non-motile Consistent with <i>E. faecium</i>
Genotypic Analysis Sequencing of 16S ribosomal RNA gene (~ 1500 base pairs)	Consistent with <i>E. faecium</i>	Consistent with <i>E. faecium</i> ⁴
Viability (post-freeze)²	Growth	Growth

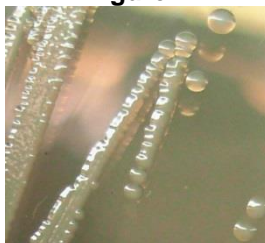
¹*E. faecium*, strain HF50106 (also referred to as EnGen0187) was deposited by Michael S. Gilmore, Sir William Osler Professor of Ophthalmology, Department of Ophthalmology, Massachusetts Eye and Ear Infirmary, Boston, Massachusetts, USA. NR-32054 was produced by inoculation of the deposited material into Brain Heart Infusion broth and incubated for 24 hours at 37°C in an aerobic atmosphere. Broth inoculum was added to Brain Heart Infusion kolles, which were grown 24 hours at 37°C in an aerobic atmosphere to produce this lot. Purity of this lot was assessed for 7 days under propagation conditions.

²24 hours at 37°C in an aerobic atmosphere on BHI agar

³24 hours at 37°C in an aerobic atmosphere on Tryptic Soy agar with 5% defibrinated sheep blood

⁴≥ 99% identical to GenBank: AITT01000007 (*E. faecium*, strain HF50106)

Figure 1



Date: 16 DEC 2013

Signature:

Title:

Technical Manager, BEI Authentication or designee

ATCC[®], on behalf of BEI Resources, hereby represents and warrants that the material provided under this certificate has been subjected to the tests and procedures specified and that the results described, along with any other data provided in this certificate, are true and accurate to the best of ATCC[®]'s knowledge.

ATCC[®] is a trademark of the American Type Culture Collection.

You are authorized to use this product for research use only. It is not intended for human use.

