

***Klebsiella pneumoniae* subsp. *pneumoniae*, Strain WGLW5**

Catalog No. HM-749

Product Description: *Klebsiella pneumoniae* (*K. pneumoniae*) subsp. *pneumoniae*, strain WGLW5 was isolated from a stool sample of a mouse with *T-bet*^{-/-} x *Rag2*^{-/-} ulcerative colitis (TRUC) in Boston, Massachusetts, USA.

Lot^{1,2}: 61859927

Manufacturing Date: 24JUL2013

TEST	SPECIFICATIONS	RESULTS
Phenotypic Analysis Cellular morphology Colony morphologies ^{3,4}	Gram-negative rods Report results	Gram-negative rods Colony type 1: Circular, entire, convex, mucoid, smooth and cream (Figure 1) Colony type 2: Circular, entire, slightly peaked, smooth and cream (Figure 1)
Genotypic Analysis Sequencing of 16S ribosomal RNA gene (~ 1480 base pairs)	≥ 99% identical to GenBank: AMLO01000018 (<i>K. pneumoniae</i> subsp. <i>pneumoniae</i> , strain WGLW5)	≥ 99% identical to GenBank: AMLO01000018 (<i>K. pneumoniae</i> subsp. <i>pneumoniae</i> , strain WGLW5)
Viability (post-freeze)⁴	Growth	Growth

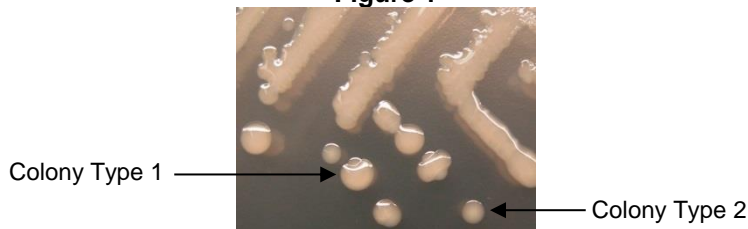
¹Quality control of HMP material is only performed to demonstrate that the material distributed by BEI Resources is identical to the deposited material. It should not be considered a complete characterization of the deposited organism.

²*K. pneumoniae* subsp. *pneumoniae*, strain WGLW5 was passaged three times and deposited by Wendy S. Garrett, M.D., Ph.D., Assistant Professor, and Leslie H. Wardwell, Department of Immunology and Infectious Diseases, Harvard School of Public Health, Boston, Massachusetts, USA. HM-749 was produced by inoculation of the deposited material into Nutrient broth and incubated for 24 hours at 37°C in an aerobic atmosphere. Broth inoculum was added to kolles which were grown 24 hours at 37°C to produce this lot. Purity of this lot was assessed for 7 days under propagation conditions.

³Two colony types were observed. Plating of the individual colony types showed that they did not revert to the mixed colony type. The 16S ribosomal RNA gene of each colony type was sequenced and found to be consistent with the other colony type and *K. pneumoniae* subsp. *pneumoniae*.

⁴24 hours at 37°C in an aerobic atmosphere on Nutrient agar

Figure 1



Date: 18 DEC 2013

Signature:

Title: Technical Manager, BEI Authentication or designee

ATCC®, on behalf of BEI Resources, hereby represents and warrants that the material provided under this certificate has been subjected to the tests and procedures specified and that the results described, along with any other data provided in this certificate, are true and accurate to the best of ATCC®'s knowledge.

ATCC® is a trademark of the American Type Culture Collection. You are authorized to use this product for research use only. It is not intended for human use.

