

***Klebsiella pneumoniae* subsp. *pneumoniae*, Strain WGLW1**

**Catalog No. HM-750**

**Product Description:** *Klebsiella pneumoniae* (*K. pneumoniae*) subsp. *pneumoniae*, strain WGLW1 was isolated from human urine in Boston, Massachusetts, USA.

**Lot<sup>1,2</sup>: 61859928**

**Manufacturing Date: 10JUL2013**

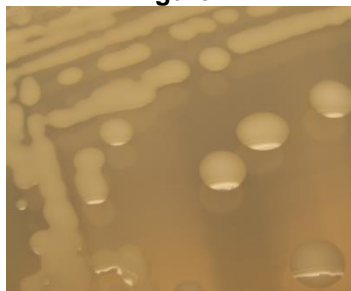
| TEST   | SPECIFICATIONS  | RESULTS   |
|--|---|---|
| <b>Phenotypic Analysis</b><br>Cellular morphology<br>Colony morphology <sup>3</sup>  | Gram-negative rods<br>Report results  | Gram-negative rods<br>Circular, entire, convex, smooth, mucoid and cream (Figure 1)                         |
| <b>Genotypic Analysis</b><br>Sequencing of 16S ribosomal RNA gene (~ 940 base pairs) | ≥ 99% identical to GenBank:<br>AMLL01000001 ( <i>K. pneumoniae</i> subsp. <i>pneumoniae</i> , strain WGLW1) | ≥ 99% identical to GenBank:<br>AMLL01000001 ( <i>K. pneumoniae</i> subsp. <i>pneumoniae</i> , strain WGLW1) |
| <b>Viability (post-freeze)<sup>3</sup></b>   | Growth  | Growth  |

<sup>1</sup>Quality control of HMP material is only performed to demonstrate that the material distributed by BEI Resources is identical to the deposited material. It should not be considered a complete characterization of the deposited organism.

<sup>2</sup>*K. pneumoniae* subsp. *pneumoniae*, strain WGLW1 was passaged three times and deposited by Wendy S. Garrett, M.D., Ph.D., Assistant Professor, and Leslie H. Wardwell, Department of Immunology and Infectious Diseases, Harvard School of Public Health, Boston, Massachusetts, USA. HM-750 was produced by inoculation of the deposited material into Nutrient broth and incubated for 24 hours at 37°C in an aerobic atmosphere. Broth inoculum was added to kolles which were grown 24 hours at 37°C to produce this lot. Purity of this lot was assessed for 7 days under propagation conditions.

<sup>3</sup>24 hours at 37°C in an aerobic atmosphere on Nutrient agar

**Figure 1**



**Date:** 18 DEC 2013

**Signature:**

**Title:** Technical Manager, BEI Authentication or designee

ATCC®, on behalf of BEI Resources, hereby represents and warrants that the material provided under this certificate has been subjected to the tests and procedures specified and that the results described, along with any other data provided in this certificate, are true and accurate to the best of ATCC®'s knowledge.

ATCC® is a trademark of the American Type Culture Collection. You are authorized to use this product for research use only. It is not intended for human use.

