

**Genomic RNA from Influenza A Virus, A/Aichi/2/1968 (H3N2)**
**Catalog No. NR-9534**

This reagent is the property of the U.S. Government.

**Product Description:** Genomic RNA was isolated from a preparation of pooled allantoic fluid from specific-pathogen free (SPF) embryonated chicken eggs<sup>1</sup> infected with influenza A virus, A/Aichi/2/1968 (H3N2).

**Lot: 62153957**
**Manufacturing Date: 12NOV2013**

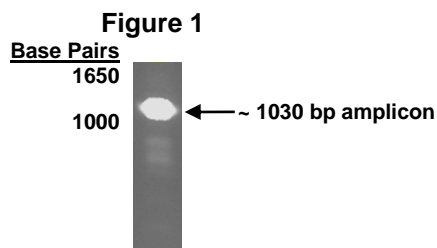
TEST	SPECIFICATIONS	RESULTS
<b>Sequencing of Influenza A Specific Region</b> Matrix gene (943 nucleotides)	Consistent with A/Aichi/2/1968 (H3N2)  Identical to BEI Resources NR-3177	99% identity with A/Aichi/2/1968 (H3N2) (GenBank: CY121118) Identical to BEI Resources NR-3177
<b>Total RNA Content by RiboGreen® Measurement (Viral, Cellular and Carrier)</b>	Report results	143 ng per 100 µL
<b>Functional Activity by RT-PCR Amplification<sup>3</sup></b> Matrix (M) gene <sup>4</sup>	~ 1030 bp amplicon	~ 1030 bp amplicon (Figure 1)
<b>Virus Inactivation</b> 10% of total yield incubated in SPF embryonated chicken eggs <sup>1</sup> and evaluated by hemagglutination assay <sup>5</sup>	No virus detected	No virus detected

<sup>1</sup>11-day-old SPF Embryonated Chicken Eggs acquired from B&E Eggs, York Springs, Pennsylvania

<sup>2</sup>Nucleic acid was extracted from a preparation of influenza A virus, A/Aichi/2/1968 (H3N2) (BEI Resources NR-3177; Lot 57950344) using a QIAamp® Viral RNA Mini kit (Qiagen 52906).

<sup>3</sup>Amplified using an iScript™ One-Step RT-PCR Kit with SYBR® Green (Bio-Rad 170-8892) with 5 µL of NR-9534 in a 50 µL reaction

<sup>4</sup>The M gene primers are described in Hoffmann, E., et al. "Universal Primer Set for the Full-Length Amplification of All Influenza A Viruses." *Arch. Virol.* 146 (2001): 2275-2289. PubMed: 11811679.

<sup>5</sup>This extraction procedure has been shown to consistently inactivate 100% of influenza viruses.

**Date:** 15 JAN 2014

**Signature:**
*Michael R. Gryn*
**Title:**

Technical Manager, BEI Authentication or designee

ATCC®, on behalf of BEI Resources, hereby represents and warrants that the material provided under this certificate has been subjected to the tests and procedures specified and that the results described, along with any other data provided in this certificate, are true and accurate to the best of ATCC®'s knowledge.

ATCC® is a trademark of the American Type Culture Collection.

You are authorized to use this product for research use only. It is not intended for human use.


**BEI Resources**
[www.beiresources.org](http://www.beiresources.org)

E-mail: [contact@beiresources.org](mailto:contact@beiresources.org)

Tel: 800-359-7370

Fax: 703-365-2898