

**Salmonella enterica subsp. enterica, Strain SL480 (Serovar Schwarzengrund)**

**Catalog No. NR-28796**

**Product Description:** *Salmonella enterica* (*S. enterica*) subsp. *enterica*, strain SL480 (also referred to as DBS\_GA\_F25499, CVM35940, AM08915-B and OR000440), was isolated in 2000 from a human patient in Oregon, USA. This strain is reported to be multi-drug resistant.

**Lot<sup>1</sup>: 61683852**

**Manufacturing Date: 08MAY2013**

TEST	SPECIFICATIONS	RESULTS
<b>Phenotypic Analysis</b> Cellular morphology Colony morphology <sup>2</sup>  Analytical profile index (API <sup>®</sup> 20 E) <sup>3</sup>	Gram-negative rod Report results  Consistent with <i>Salmonella</i> spp.	Gram-negative rod Circular, convex, entire, smooth and cream (Figure 1) Consistent with <i>Salmonella</i> spp.
<b>Genotypic Analysis</b> Sequencing of 16S ribosomal RNA gene (~ 920 base pairs) Riboprinter <sup>®</sup> Microbial Characterization System	Consistent with <i>S. enterica</i> Consistent with <i>S. enterica</i>	Consistent with <i>S. enterica</i> subsp. <i>enterica</i> Consistent with <i>S. enterica</i> subsp. <i>enterica</i> serovar Schwarzengrund
<b>Serogroup Analysis</b>	Report results	Serogroup B <sup>4</sup>
<b>Viability (post-freeze)<sup>2</sup></b>	Growth	Growth

<sup>1</sup>NR-28796 was produced by inoculation of the deposited material into Nutrient broth and incubated 24 hours at 37°C in an aerobic atmosphere.

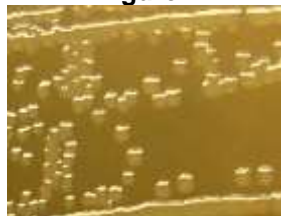
Broth inoculum was added to kolles, which were incubated for 24 hours at 37°C in an aerobic atmosphere to produce this lot.

<sup>2</sup>24 hours at 37°C in an aerobic atmosphere on Nutrient agar

<sup>3</sup>Additional serological tests are required to determine *Salmonella* species using API<sup>®</sup> 20 E.

<sup>4</sup>Serogroup B contains serotype Schwarzengrund in addition to other serotypes, see Ng, S. P., et al. "Detection and Serogroup Differentiation of *Salmonella* spp. in Food within 30 Hours by Enrichment-Immunoassay with a T6 Monoclonal Antibody Capture Enzyme-Linked Immunosorbent Assay." *Appl. Environ. Microbiol.* 62 (1996): 2794-2302. PubMed: 8779567.

**Figure 1**



**Date:** 14 JAN 2014

**Signature:**

**Title:**

Technical Manager, BEI Authentication or designee

ATCC<sup>®</sup>, on behalf of BEI Resources, hereby represents and warrants that the material provided under this certificate has been subjected to the tests and procedures specified and that the results described, along with any other data provided in this certificate, are true and accurate to the best of ATCC<sup>®</sup>'s knowledge.

ATCC<sup>®</sup> is a trademark of the American Type Culture Collection.

You are authorized to use this product for research use only. It is not intended for human use.

