

Escherichia coli, Strain E47a

Catalog No. NR-17680

Product Description: *Escherichia coli* (*E. coli*), strain E47a, serotype O25:K19:H12, was isolated from a human peritoneum; it has been typed as an O25:K19:H12 strain.

Lot¹: 61859939

Manufacturing Date: 17JUL2013

| TEST | SPECIFICATIONS | RESULTS |
|---|--|--|
| Phenotypic Analysis Cellular morphology Colony morphologies ^{2,3} Motility (wet mount) Analytical profile index (API [®] 20 E) | Gram-negative rods Report results Report results Consistent with <i>E. coli</i> | Gram-negative rods Colony type 1: Irregular, low convex, undulate, smooth and gray (Figure 1) Colony type 2: Circular, convex, entire, smooth and white (Figure 2) Motile Consistent with <i>E. coli</i> |
| Genotypic Analysis Sequencing of 16S ribosomal RNA gene (~ 1490 base pairs) Riboprinter [®] Microbial Characterization System | Consistent with <i>E. coli</i> Consistent with <i>E. coli</i> | Consistent with <i>E. coli</i> ⁴ Consistent with <i>E. coli</i> |
| PCR Assay of Extracted DNA PCR amplification of chromosomal borne virulence markers <i>stx1</i> <i>stx2</i> | Report results Report results | Negative Negative |
| Viability (post-freeze)² | Growth | Growth |

¹NR-17680 was produced by inoculation of the deposited material into Tryptic Soy broth and grown 24 hours at 37°C in an aerobic atmosphere. Broth inoculum was added to Tryptic Soy agar with 5% defibrinated sheep blood kolles which were grown 24 hours at 37°C in an aerobic atmosphere to produce this lot. Purity of this lot was assessed for 7 days under propagation conditions.

²24 hours at 37°C in an aerobic atmosphere on Tryptic Soy agar with 5% defibrinated sheep blood

³Two colony types were observed. Plating of the individual colony types showed that they did not revert to a mixed colony type. The 16S ribosomal RNA gene of each colony type was sequenced and found to be consistent with *E. coli*.

⁴Also consistent with *Shigella* species

Figure 1

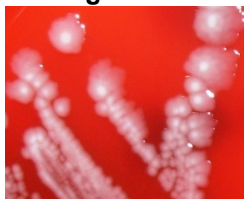


Figure 2



Date: 19 MAY 2015

Signature:

BEI Resources Authentication

ATCC[®], on behalf of BEI Resources, hereby represents and warrants that the material provided under this certificate has been subjected to the tests and procedures specified and that the results described, along with any other data provided in this certificate, are true and accurate to the best of ATCC[®]'s knowledge.

ATCC[®] is a trademark of the American Type Culture Collection.

You are authorized to use this product for research use only. It is not intended for human use.

