

***Salmonella enterica* subsp. *enterica*, Strain 14028s ΔSTM14:0425 (Serovar Typhimurium)**

Catalog No. NR-40505

Product Description: *Salmonella enterica* (*S. enterica*) subsp. *enterica*, strain 14028s ΔSTM14:0425 (STM:0363) (serovar Typhimurium) was derived from strain 14028s. The deletion mutant was produced by creating a PCR product with ΔSTM14:0425 homologous sequences at the 5' and 3' ends of a linear fragment containing a kanamycin resistance cassette. *S. enterica* subsp. *enterica*, strain 14028s was transformed, and insertion of the *kan* cassette was confirmed by PCR. The final non-polar deletions were completed by elimination of the *kan* cassette.

Lot¹: 62202663

Manufacturing Date: 27NOV2013

TEST	SPECIFICATIONS	RESULTS
Phenotypic Analysis Cellular morphology Colony morphology ² Motility (wet mount) Analytical profile index (API [®] 20 E) ³	Gram-negative rod Report results Report results Consistent with <i>Salmonella</i> spp.	Gram-negative rod Circular, convex, entire, smooth and cream (Figure 1) Motile Consistent with <i>Salmonella</i> spp.
Genotypic Analysis Sequencing of 16S ribosomal RNA gene (~ 1490 base pairs) Riboprinter [®] Microbial Characterization System	Consistent with <i>S. enterica</i> Consistent with <i>S. enterica</i>	Consistent with <i>S. enterica</i> subsp. <i>enterica</i> Consistent with <i>S. enterica</i> subsp. <i>enterica</i> serovar Typhimurium
Serogroup Analysis	Report results	Serogroup B ⁴
Viability (post-freeze)²	Growth	Growth

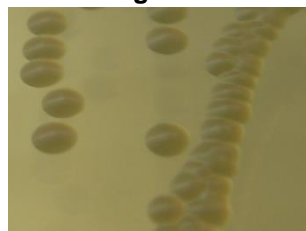
¹NR-40505 was produced by inoculation of the deposited material into LB broth (supplemented with 1% Bacto-tryptone, 0.5% yeast extract and 1% sodium chloride) and grown 24 hours in an aerobic atmosphere at 37°C. Broth inoculum was added to kolles which was grown 24 hours at 37°C and aerobic atmosphere to produce this lot. Purity of this lot was accessed for 7 days under propagation conditions.

²24 hours at 37°C and aerobic atmosphere on to LB agar (supplemented with 1% Bacto-tryptone, 0.5% yeast extract and 1% sodium chloride)

³Additional serological tests are required to determine *Salmonella* species using API[®] 20 E

⁴Serogroup B contains serotype Typhimurium in addition to other serotypes

Figure 1



Date: 22 JAN 2014

Signature:

Title: Technical Manager, BEI Authentication or designee

ATCC[®], on behalf of BEI Resources, hereby represents and warrants that the material provided under this certificate has been subjected to the tests and procedures specified and that the results described, along with any other data provided in this certificate, are true and accurate to the best of ATCC[®]'s knowledge.

ATCC[®] is a trademark of the American Type Culture Collection.

You are authorized to use this product for research use only. It is not intended for human use.



BEI Resources

www.beiresources.org

E-mail: contact@beiresources.org

Tel: 800-359-7370

Fax: 703-365-2898