

Genomic RNA from Dengue Virus Type 3 (DEN-3), Philippines/H87/1956

Catalog No. NR-2771

Product Description: Genomic RNA was isolated from a preparation of cell lysate and supernatant from African green monkey (Vero) cells¹ infected with DEN-3, Philippines/H87/1956.

Lot²: 62153955

Manufacturing Date: 22NOV2013

TEST	SPECIFICATIONS	RESULTS
Sequencing of Species-Specific Region (562 nucleotides)	Consistent with DEN-3 Philippines/H87/1956	99% identity with DEN-3 Philippines/H87/1956 (GenBank: AB609590)
Functional Activity by RT-PCR Amplification³	~ 1700 bp amplicon	~ 1700 bp amplicon (see Figure 1)
Total RNA Content by RiboGreen[®] Measurement (Viral, Cellular, and Carrier)	Report results	171 ng per 100 µL
Viral RNA Content by Droplet Digital RT-PCR	Report results	1.8 × 10 ⁶ copies per µL
Virus Inactivation 10% of total yield inoculated on Vero cells and evaluated for expression of viral antigen ^{1,4,5}	No virus detected	No virus detected

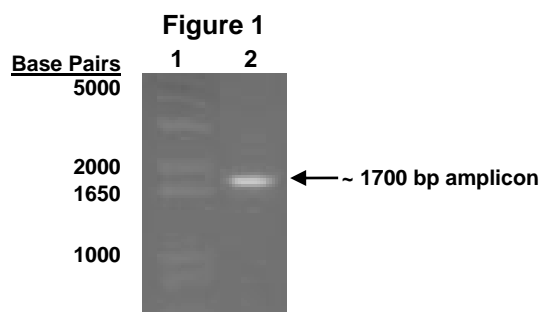
¹Vero cells: ATCC[®] CCL-81[™]

²Nucleic acid was extracted from a preparation of DEN-3, Philippines/H87/1956 (BEI Resources NR-80, Lot 5514033) using a QIAamp[®] Viral RNA Mini Kit (Qiagen 52906).

³Amplified using iScript[™] One-Step RT-PCR Kit with SYBR[®] Green (Bio-Rad 170-8892) with 10 µL of NR-2771 in a 50 µL reaction

⁴Using Monoclonal Anti-Dengue Virus Type 3 Envelope Protein, Clone E11 (BEI Resources NR-15518)

⁵Use of the QIAamp[®] Viral RNA Mini Kit has been demonstrated to consistently inactivate 100% of dengue viruses, as shown by the absence of cytopathic effect (CPE) and expression of viral antigen after plating the entire extract on virus-susceptible cells.



Lane 1: Invitrogen[™] TrackIt[™] 1 Kb Plus DNA Ladder

Lane 2: NR-2771

Date: 07 JUL 2016

Signature: *Michael R. Gynther*

BEI Resources Authentication

ATCC[®], on behalf of BEI Resources, hereby represents and warrants that the material provided under this certificate has been subjected to the tests and procedures specified and that the results described, along with any other data provided in this certificate, are true and accurate to the best of ATCC[®]'s knowledge.

ATCC[®] is a trademark of the American Type Culture Collection.

You are authorized to use this product for research use only. It is not intended for human use.

