

Prevotella veroralis, Oral Taxon 572, Strain F0319

Catalog No. HM-92

Product Description: *Prevotella veroralis* (*P. veroralis*), Oral Taxon 572, strain F0319 was isolated in September 1985 from the subgingival plaque of an 11-year-old male patient in the United States.

Lot^{1,2}: 61710947

Manufacturing Date: 17MAY2013

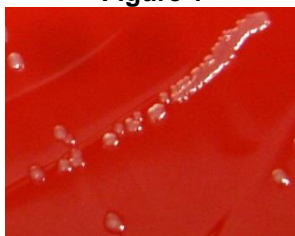
TEST	SPECIFICATIONS	RESULTS
Phenotypic Analysis Cellular morphology Colony morphology ³	Report results Report results	Gram-negative bacilli Circular, entire, convex, glistening and smooth (Figure 1)
Genotypic Analysis Sequencing of 16S ribosomal RNA gene (~ 1440 base pairs)	≥ 99% identical to GenBank: ACVA01000027 (<i>P. veroralis</i> , strain F0319)	≥ 99% identical to GenBank: ACVA01000027 (<i>P. veroralis</i> , strain F0319)
Viability (post-freeze)³	Growth	Growth

¹Quality control of HMP material is only performed to demonstrate that the material distributed by BEI Resources is identical to the deposited material. It should not be considered a complete characterization of the deposited organism.

²*P. veroralis*, Oral Taxon 572, strain F0319 was deposited by Jacques Izard, Assistant Member of the Staff, Department of Molecular Genetics, The Forsyth Institute, Boston, Massachusetts. The deposited material was inoculated into Modified Chopped Meat medium and incubated for 48 hours at 37°C and anaerobic atmosphere (80% N₂:10% CO₂:10% H₂). The material from the initial growth was passaged three times in Modified Chopped Meat medium for 48 hours at 37°C and anaerobic atmosphere (90% N₂:5% CO₂:5% H₂) to produce this lot.

³48 hours at 37°C and anaerobic atmosphere (90% N₂:5% CO₂:5% H₂) on Tryptic Soy agar with 5% defibrinated sheep blood

Figure 1



Date: 10 MAR 2014

Signature:

Title: Technical Manager, BEI Authentication or designee

ATCC®, on behalf of BEI Resources, hereby represents and warrants that the material provided under this certificate has been subjected to the tests and procedures specified and that the results described, along with any other data provided in this certificate, are true and accurate to the best of ATCC®'s knowledge.

ATCC® is a trademark of the American Type Culture Collection.

You are authorized to use this product for research use only. It is not intended for human use.

