

Staphylococcus aureus, Strain M1510 (MRSA)

Catalog No. NR-41895

Product Description: *Staphylococcus aureus* (*S. aureus*), strain M1510 was isolated in 2004 from nares of an adult female. *S. aureus*, strain M1510 is a methicillin-resistant *S. aureus* (MRSA) strain.

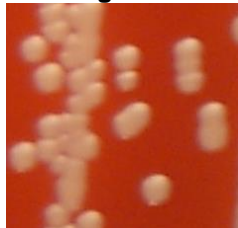
Lot¹: 62261479

Manufacturing Date: 15JAN2014

TEST	SPECIFICATIONS	RESULTS
Phenotypic Analysis Cellular morphology Colony morphology ² Motility (wet mount) Oxacillin resistance ³ Hemolysis ² Biochemical characterization: Analytical profile index (API Staph [®]) ⁴ Catalase	Gram-positive cocci Report results Report results Resistant Report results Consistent with <i>S. aureus</i> Positive	Gram-positive cocci Circular, convex, entire, smooth, opaque and cream (Figure 1) Non-motile Resistant β-hemolytic Consistent with <i>S. aureus</i> Positive
Genotypic Analysis Sequencing of 16S ribosomal RNA gene (~1510 base pairs) Riboprinter [®] Microbial Characterization System	Consistent with <i>S. aureus</i> Consistent with <i>S. aureus</i>	Consistent with <i>S. aureus</i> Consistent with <i>S. aureus</i>
Viability (post-freeze)²	Growth	Growth

¹NR-41895 was produced by inoculation of the deposited material into Tryptic Soy broth and grown 26 hours at 37°C in an aerobic atmosphere. Broth inoculum was added to Tryptic Soy agar with 5% defibrinated sheep blood kolles which were grown 20 hours at 37°C in an aerobic atmosphere to produce this lot. Purity of this lot was assessed for 7 days under propagation conditions.
²22 hours at 37°C and aerobic atmosphere on Tryptic Soy agar with 5% defibrinated sheep blood
³24 hours at 30°C and aerobic atmosphere on Mueller Hinton agar containing 6 µg/mL oxacillin and 4% NaCl (Oxacillin Screen Agar BBL™ 221952)
⁴The API Staph[®] identification includes a test for lysostaphin resistance that was not completed for NR-41895. NR-41895 is identified as *S. aureus* by the API Staph[®] test regardless of the lysostaphin resistance test results.

Figure 1



Date: 19 MAR 2014

Signature: 

Title: Technical Manager, BEI Authentication or designee

ATCC[®], on behalf of BEI Resources, hereby represents and warrants that the material provided under this certificate has been subjected to the tests and procedures specified and that the results described, along with any other data provided in this certificate, are true and accurate to the best of ATCC[®]'s knowledge.

ATCC[®] is a trademark of the American Type Culture Collection. You are authorized to use this product for research use only. It is not intended for human use.

