

Bacteroides finegoldii, Strain CL09T03C10

Catalog No. HM-727

Product Description: *Bacteroides finegoldii* (*B. finegoldii*), strain CL09T03C10 was isolated from healthy adult human feces in Boston, Massachusetts, USA.

Lot^{1,2}: 62251377

Manufacturing Date: 10JAN2014

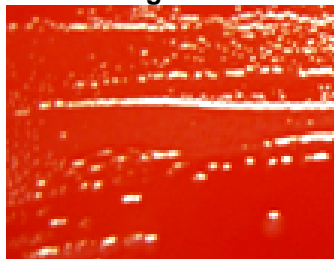
TEST	SPECIFICATIONS	RESULTS
Phenotypic Analysis Cellular morphology Colony morphology ³ Motility (wet mount)	Gram-negative rods Report results Report results	Gram-negative rods Circular, low convex, entire, translucent and smooth (Figure 1) Non-motile
Genotypic Analysis Sequencing of 16S ribosomal RNA gene (~ 900 base pairs)	≥ 99% identical to GenBank: AGXW01000012 (<i>B. finegoldii</i> , strain CL09T03C10)	≥ 99% identical to GenBank: AGXW01000012 (<i>B. finegoldii</i> , strain CL09T03C10)
Viability (post-freeze)³	Growth	Growth

¹Quality control of HMP material is only performed to demonstrate that the material distributed by BEI Resources is identical to the deposited material. It should not be considered a complete characterization of the deposited organism.

²*B. finegoldii*, strain CL09T03C10 was deposited by Laurie E. Comstock, PhD, Associate Microbiologist, Department of Medicine, Channing Laboratory, Brigham and Women's Hospital, Harvard Medical School, Boston, Massachusetts. HM-727 was produced by inoculation of the deposited material into Modified Reinforced Clostridial broth and incubated for 47 hours at 37°C in an anaerobic atmosphere (80% N₂:20% CO₂). The material from the initial growth was passaged once in Modified Reinforced Clostridial broth for 49 hours at 37°C in an anaerobic atmosphere to produce this lot. Purity of this lot was assessed for 7 days under propagation conditions.

³44 hours at 37°C and anaerobic atmosphere on Tryptic Soy agar with 5% defibrinated sheep blood

Figure 1



Date: 14 MAR 2014

Signature:

Title:

Technical Manager, BEI Authentication or designee

ATCC®, on behalf of BEI Resources, hereby represents and warrants that the material provided under this certificate has been subjected to the tests and procedures specified and that the results described, along with any other data provided in this certificate, are true and accurate to the best of ATCC's knowledge.

ATCC® is a trademark of the American Type Culture Collection.

You are authorized to use this product for research use only. It is not intended for human use.

