

Monoclonal Anti-Influenza Virus H1 Hemagglutinin (HA), A/California/04/2009 (H1N1)pdm09, Clone 4F8 (produced *in vitro*)

Catalog No. NR-42021

This reagent is the property of the U.S. Government.

Product Description: Mouse monoclonal antibody prepared against the H1 hemagglutinin (HA) protein of the A/California/04/2009 (H1N1)pdm09 strain of influenza virus was affinity purified from clone 4F8 hybridoma supernatant using protein G magnetic beads.

Lot: 61715293

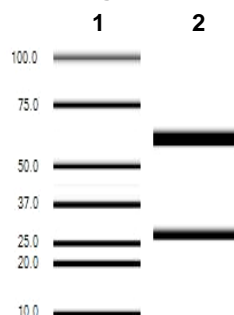
Manufacturing Date: 15JUN2013

TEST	SPECIFICATIONS	RESULTS
Antibody Class Determination	Report results	IgG2ak
Experion Pro260 Analysis	Correct molecular weight (MW) for heavy and light chains Report results	Correct MW for heavy and light chains (Figure 1) 97.4% pure
Concentration by Spectrophotometer at OD ₂₈₀	Report results	1.6 mg per mL
Functional Activity Indirect Immunofluorescence Assay with A/California/04/2009 (H1N1)pdm09-infected MDCK cells ¹ (Figure 2) Neutralization of A/California/04/2009 (H1N1)pdm09 infectivity in MDCK cells ²	Fluorescence observed Neutralization observed	Fluorescence observed Neutralization observed
Sterility	0.22 µm filter-sterilized	0.22 µm filter-sterilized

¹MDCK cells (ATCC® CCL-34™) were infected with influenza virus A/California/04/2009 (H1N1)pdm09 (BEI Resources NR-13658) at an MOI of 0.01 and stained 2 days later with NR-42021 at dilutions of 1:50 and 1:500, followed by FITC-conjugated goat anti-mouse IgG F(ab')₂ fragment (Millipore 5008).

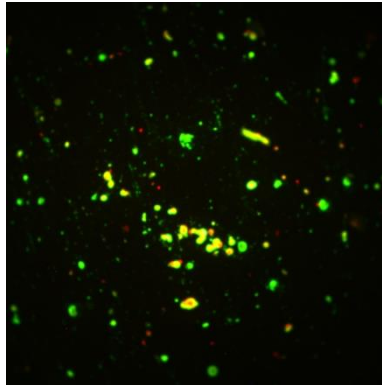
²100 TCID₅₀ of influenza virus A/California/04/2009 (H1N1)pdm09 (BEI Resources NR-13658) was pre-incubated with NR-42021 at dilutions of 1:100 and 1:500 and then used to inoculate cultures of MDCK cells (ATCC® CCL-34™). Cells were monitored for the presence of cytopathic effects for three days, and culture supernatants were tested for the presence of hemagglutinating activity. BEI Resources NR-19866 (Monoclonal Anti-Influenza Virus H1 Hemagglutinin (HA), A/California/04/2009 (H1N1)pdm09, Clone S-OIV-5H7) and NR-15511 (Monoclonal Anti-Dengue Virus Type 3 Envelope Protein, Clone E2) were used as positive and negative controls, respectively.

Figure 1



Lane 1: MW Markers (kDa)
Lane 2: NR-42021

Figure 2



NR-42021, 1:500 dilution

Date: 24 MAR 2014

Signature: *Michael R. Gypker*

Title: Technical Manager, BEI Authentication or designee

ATCC[®], on behalf of BEI Resources, hereby represents and warrants that the material provided under this certificate has been subjected to the tests and procedures specified and that the results described, along with any other data provided in this certificate, are true and accurate to the best of ATCC[®]'s knowledge.

ATCC[®] is a trademark of the American Type Culture Collection.
You are authorized to use this product for research use only. It is not intended for human use.

