

Prevotella oralis, Strain HGA0225

Catalog No. HM-849

Product Description: *Prevotella oralis* (*P. oralis*), strain HGA0225 was isolated from a biopsy of large intestine mucosa of a human subject in the United States.

Lot^{1,2}: 62202654

Manufacturing Date: 19DEC2013

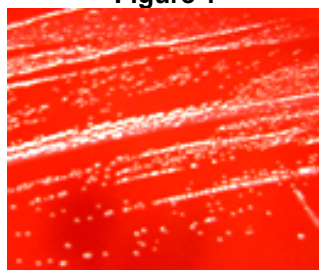
TEST	SPECIFICATIONS	RESULTS
Phenotypic Analysis Cellular morphology Colony morphology ³ Motility (wet mount)	Gram-negative rods Report results Non-motile	Gram-negative rods Circular, convex, entire, smooth and white (Figure 1) Non-motile
Genotypic Analysis Sequencing of 16S ribosomal RNA gene (~ 910 base pairs)	≥ 99% identical to GenBank: ATFN01000011 (<i>P. oralis</i> , strain HGA0225)	≥ 99% identical to GenBank: ATFN01000011 (<i>P. oralis</i> , strain HGA0225)
Viability (post-freeze)³	Growth	Growth

¹Quality control of HMP material is only performed to demonstrate that the material distributed by BEI Resources is identical to the deposited material. It should not be considered a complete characterization of the deposited organism.

²*P. oralis*, strain HGA0225 was deposited by Thomas M. Schmidt, Professor, Department of Microbiology and Molecular Genetics, Michigan State University, East Lansing, Michigan, USA. HM-849 was produced by inoculation of the deposited material into Modified Chopped Meat medium and incubated for 72 hours at 37°C in an anaerobic atmosphere (80% N₂:20% CO₂). The material from the initial growth was passaged once in Modified Chopped Meat medium for 71 hours at 37°C in an anaerobic atmosphere to produce this lot. Purity of this lot was assessed for 7 days under propagation conditions.

³68 hours at 37°C and anaerobic atmosphere on Tryptic Soy agar with 5% defibrinated sheep blood

Figure 1



Date: 25 MAR 2014

Signature:

Title: Technical Manager, BEI Authentication or designee

ATCC®, on behalf of BEI Resources, hereby represents and warrants that the material provided under this certificate has been subjected to the tests and procedures specified and that the results described, along with any other data provided in this certificate, are true and accurate to the best of ATCC®'s knowledge.

ATCC® is a trademark of the American Type Culture Collection. You are authorized to use this product for research use only. It is not intended for human use.

