

Schistosoma mansoni, Protein Disulfide Isomerase (PDI) Gene Reverse Primer

Catalog No. NR-41363

This reagent is the tangible property of the U.S. Government.

Product Description: NR-41363 contains a twenty-three nucleotide reverse primer designed to amplify the protein disulfide isomerase (PDI) gene from *Schistosoma mansoni* (*S. mansoni*) when paired with the PDI forward primer (NR-41327). The sequence of the PDI reverse 23-mer is 5'-GCATCGGAGTCTCTTTACACCCC-3'.

Lot¹: 62128124

Manufacturing Date: 01OCT2013

TEST	SPECIFICATIONS	RESULTS
PCR Amplification and Sequencing^{2,3} Amplicon size	~ 320 base pair amplicon	~ 320 base pair amplicon (Figure 1)
Primer Characteristics¹ Molecular weight Primer melting temperature (T _m) GC content Primer concentration Moles of primer Micrograms of primer	Report results Report results Report results Report results Report results Report results	6912 g/mol 68.1°C 60.9% 100 µM 3.0 nmoles per vial 20.7 µg per vial
Gene Stability by Quantitative Real-Time PCR	Report results	No statistical significant difference in threshold cycle (Ct) ^{4,5}

¹NR-41363 lot 62128124 was manufactured by Eurofins MWG Operon. Primer characteristics were determined by the manufacturer.

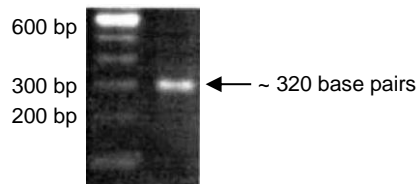
²PCR completed by the Biomedical Research Institute.

³Position 41 to 359 of GenBank: XM_002576922

⁴20 individual snails were utilized for RT-PCR amplification

⁵ANOVA test (P value = 0.01)

Figure 1: PCR Amplification of *S. mansoni* PDI Gene using NR-41327 and NR-41363



Date: 24 MAR 2014

Signature

Title: Technical Manager, BEI Authentication or designee

ATCC®, on behalf of BEI Resources, hereby represents and warrants that the material provided under this certificate has been subjected by the contributor and vendor to the tests and procedures specified and that the results described, along with any other data provided in this certificate, are true and accurate to the best of ATCC®'s knowledge.

ATCC® is a trademark of the American Type Culture Collection.

You are authorized to use this product for research use only. It is not intended for human use.

