

Mycobacterium leprae* Cytosol Fraction (MLSA)*Catalog No. NR-19330**

This reagent is the tangible property of the U.S. Government.

Product Description: NR-19330 was produced from purified *Mycobacterium leprae* (*M. leprae*) whole cells (non-irradiated, non-autoclaved) extracted from a pool of infected armadillo liver and spleen tissue. Cells were sonicated for forty, one-minute cycles and an acid fast stain of the sonicate was performed to confirm complete breakage of the cells. The sonicate was centrifuged to pellet the cell wall material and the resulting supernatant was further centrifuged to pellet the cell membrane material. The final supernatant was collected and the protein content quantitated by BCA assay.

Lot: 62345845**Manufacturing Date: 12NOV2013**

Production and QC testing were performed by Colorado State University (CSU). The CSU documentation for lot 13.Mlep.11.11.cytosol is attached.

ATCC[®], on behalf of BEI Resources, hereby represents and warrants that the material provided under this certificate has been subjected by the contractor to the tests and procedures specified and that the results described, along with any other data provided in this certificate, are true and accurate to the best of ATCC[®]'s knowledge.

ATCC[®] is a trademark of the American Type Culture Collection.

You are authorized to use this product for research use only. It is not intended for human use.



QC SHEET FOR *M. LEPRAE* CYTOSOL PROTEIN

General Information

Product Lot Number: 13.Mlep.11.11.cytosol
 Species: *Mycobacterium leprae*
 Strain: NHDP-63

Cell prep pool:

Armadillo	10E22	liver	NHDP-63	harvested	02.05.2013	5.46 mg
Armadillo	10E22	spleen	NHDP-63	harvested	02.15.2013	196.29 mg

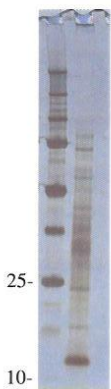
Sonication and Fractionation Information

Starting material (lot #): Batch #105 Cell amount (wet weight): 201.75 mg whole cells
 SOP #: subcellular fractionation protocol Notebook pages: JNK Book#3pg 87-88
 Date of Probe Sonication: 11/12/13 Buffer used: PBS
 Centrifugation Notes 27,000 x g spin to obtain supernatant (cytosol plus membrane); 75,000 x g spin of this to obtain supernatant fraction (MLSA) dialyzed in Mili Q water.

Quality Control Information

Clarity of product: cloudy, slightly yellow
 BCA: 5.1 µg/µl Notebook and page(s): JNK notebook #3 pp. 103-104
 Total volume: 14.5 ml Total amount of Protein: 75mg
 Silver Stain Date: 02/06/14 Western blot: 4 µg MLSA per lane, CS-01 (mAb to GroES, ML0380), 1:20 culture supernatant. Lane 1, Molecular wt; lane 2, MLSA Batch#105

QC Gel and Western blot:



silver stain



CS-01

Aliquot Information: 0.25mg x 30 vials lyophilized. 67.5mg will be aliquoted as needed.

Jade Sun / 2/7/14
 Produced/ Date

[Signature] / 2/10/2014
 Lab Supervisor/ Date