

***Bacteroides stercoris*, Strain CC31F**

Catalog No. HM-1036

Product Description: *Bacteroides stercoris* (*B. stercoris*), strain CC31F was isolated in October 2010 from colonic biopsy tissue of a human subject in Victoria, British Columbia, Canada.

Lot^{1,2}: 62344139

Manufacturing Date: 05FEB2014

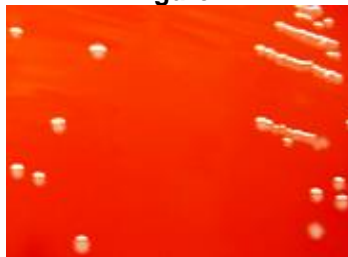
TEST	SPECIFICATIONS	RESULTS
Phenotypic Analysis Cellular morphology Colony morphology ³ Motility (wet mount)	Gram-negative rods Report results Report results	Gram-negative rods Circular, convex, entire, smooth and gray (Figure 1) Non-motile
Genotypic Analysis Sequencing of 16S ribosomal RNA gene (~ 840 base pairs)	≥ 99% identical to GenBank: ATFP01000001 (<i>B. stercoris</i> , strain CC31F)	≥ 99% identical to GenBank: ATFP01000001 (<i>B. stercoris</i> , strain CC31F)
Viability (post-freeze)³	Growth	Growth

¹Quality control of HMP material is only performed to demonstrate that the material distributed by BEI Resources is identical to the deposited material. It should not be considered a complete characterization of the deposited organism.

²*B. stercoris*, strain CC31F was deposited by Emma Allen-Vercoe, Assistant Professor, Department of Molecular and Cellular Biology, University of Guelph, Guelph, Ontario, Canada. HM-1036 was produced by inoculation of the deposited material into Modified Reinforced Clostridial broth and incubated for 72 hours at 37°C in an anaerobic atmosphere (80% N₂: 20% CO₂). The material from the initial growth was passaged once in Modified Reinforced Clostridial broth for 50 hours at 37°C in an anaerobic atmosphere to produce this lot. Purity of this lot was assessed for 7 days under propagation conditions.

³71 hours at 37°C in an anaerobic atmosphere on Tryptic Soy agar with 5% defibrinated sheep blood

Figure 1



Date: 02 APR 2014

Signature: 

Title: Technical Manager, BEI Authentication or designee

ATCC®, on behalf of BEI Resources, hereby represents and warrants that the material provided under this certificate has been subjected to the tests and procedures specified and that the results described, along with any other data provided in this certificate, are true and accurate to the best of ATCC®'s knowledge.

ATCC® is a trademark of the American Type Culture Collection. You are authorized to use this product for research use only. It is not intended for human use.

