

Cardiobacterium valvarum, Strain F0432

Catalog No. HM-477

Product Description: *Cardiobacterium valvarum* (*C. valvarum*), strain F0432 was isolated in 2008 from molar tooth dental plaque of a caries-free, 3-year-old male patient in the United States.

Lot^{1,2}: 62072075

Manufacturing Date: 01NOV2013

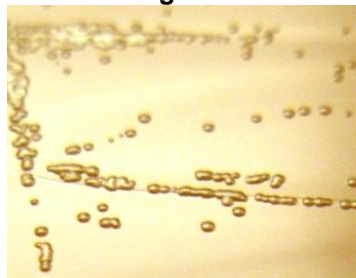
TEST	SPECIFICATIONS	RESULTS
Phenotypic Analysis Cellular morphology Colony morphology ³ Motility (wet mount)	Gram-negative rods Report results Non-motile	Gram-negative rods Circular, convex, entire, smooth and cream (Figure 1) Non-motile
Genotypic Analysis Sequencing of 16S ribosomal RNA gene (~ 890 base pairs)	≥ 99% identical to GenBank: AGCM01000099 (<i>C. valvarum</i> , strain F0432)	≥ 99% identical to GenBank: AGCM01000099 (<i>C. valvarum</i> , strain F0432)
Viability (post-freeze)³	Growth	Growth

¹Quality control of HMP material is only performed to demonstrate that the material distributed by BEI Resources is identical to the deposited material. It should not be considered a complete characterization of the deposited organism.

²*C. valvarum*, strain F0432 was deposited by Jacques Izard, Assistant Member of the Staff, Department of Molecular Genetics, The Forsyth Institute, Boston, Massachusetts, USA. HM-477 was produced by inoculation of the deposited material in Brain Heart Infusion broth onto Tryptic Soy agar with 5% defibrinated sheep blood and incubated for 51 hours at 37°C in an aerobic atmosphere with 5% CO₂. The material was passaged once onto Chocolate agar for 56 hours at 37°C in an aerobic atmosphere with 5% CO₂. The material was then passaged once in 0.85% saline onto Chocolate agar kolles for 47 hours at 37°C aerobic atmosphere with 5% CO₂ to produce this lot. Purity of this lot was assessed for 7 days under propagation conditions.

³45 hours at 37°C in an aerobic atmosphere with 5% CO₂ on Chocolate agar

Figure 1



Date: 14 APR 2014

Signature:

Title:

Technical Manager, BEI Authentication or designee

ATCC®, on behalf of BEI Resources, hereby represents and warrants that the material provided under this certificate has been subjected to the tests and procedures specified and that the results described, along with any other data provided in this certificate, are true and accurate to the best of ATCC®'s knowledge.

ATCC® is a trademark of the American Type Culture Collection.

You are authorized to use this product for research use only. It is not intended for human use.

