

Genomic DNA from Rosemary Pea (*Abrus precatorius*) Seedlings

Catalog No. NR-44092

This reagent is the tangible property of the U.S. Government.

Product Description: Genomic DNA was extracted from a preparation of rosary pea (*Abrus precatorius*) seedling leaves using the Qiagen® DNeasy® Plant Mini Kit.

Lot: 61992691

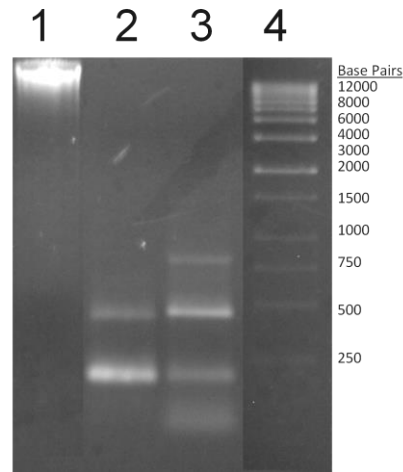
Manufacturing Date: 17OCT2013

TEST	SPECIFICATIONS	RESULTS
Agarose Gel Electrophoresis	High molecular weight chromosomal DNA	High molecular weight chromosomal DNA (Figure 1)
Concentration by A ₂₆₀ Measurement ¹	Report results	40 µg per mL
Amount of DNA per vial	Report results	2 µg
Functional Activity by PCR Amplification Abrin A chain Abrin B chain	Amplicon present Amplicon present	Amplicon present (Figure 1) Amplicon present (Figure 1)
OD ₂₆₀ /OD ₂₈₀ Ratio	1.8 to 2.0	1.9

¹Determined prior to drying by Speed Vac using standard formula: 50 µg/mL DNA = A₂₆₀ of 1

Figure 1: Agarose Gel of Genomic DNA from Rosary Pea Seedling Leaves and Abrin PCR Products

- Lane 1: Genomic DNA
- Lane 2: Abrin A chain PCR amplicon
- Lane 3: Abrin B chain PCR amplicon
- Lane 4: Stratagene Kb DNA Ladder (Cat. No. 201115)



Date: 17 DEC 2014

Signature:

Title: Technical Manager, BEI Authentication or designee

ATCC®, on behalf of BEI Resources, hereby represents and warrants that the material provided under this certificate has been subjected by the contractor to the tests and procedures specified and that the results described, along with any other data provided in this certificate, are true and accurate to the best of ATCC®'s knowledge.

ATCC® is a trademark of the American Type Culture Collection. You are authorized to use this product for research use only. It is not intended for human use.

